

# Pulsarlube **BT**

## Bluetooth - Enabled Single Point Lubricator





# PULSARLUBE BT







# Pulsarlube BT

The first in the electromechanical lubricator industry!  
Bluetooth Enabled Lubricator

## 01 Introduction

Specifications

Working Principle

APP & Server Details

## 02 Benefits & Advantages

## 03 Applications



### Pulsarlube BT Specifications



60 / 120 / 240ml



1, 2, 3 ~ 10, 11, 12 Month



Alkaline -5°C~60°C  
Lithium -20°C~60°C



Mobile Application :  
Android 5.0, IOS 7.0 or higher



Avg. 30bar(435psi)  
Max. 60bar(870psi)

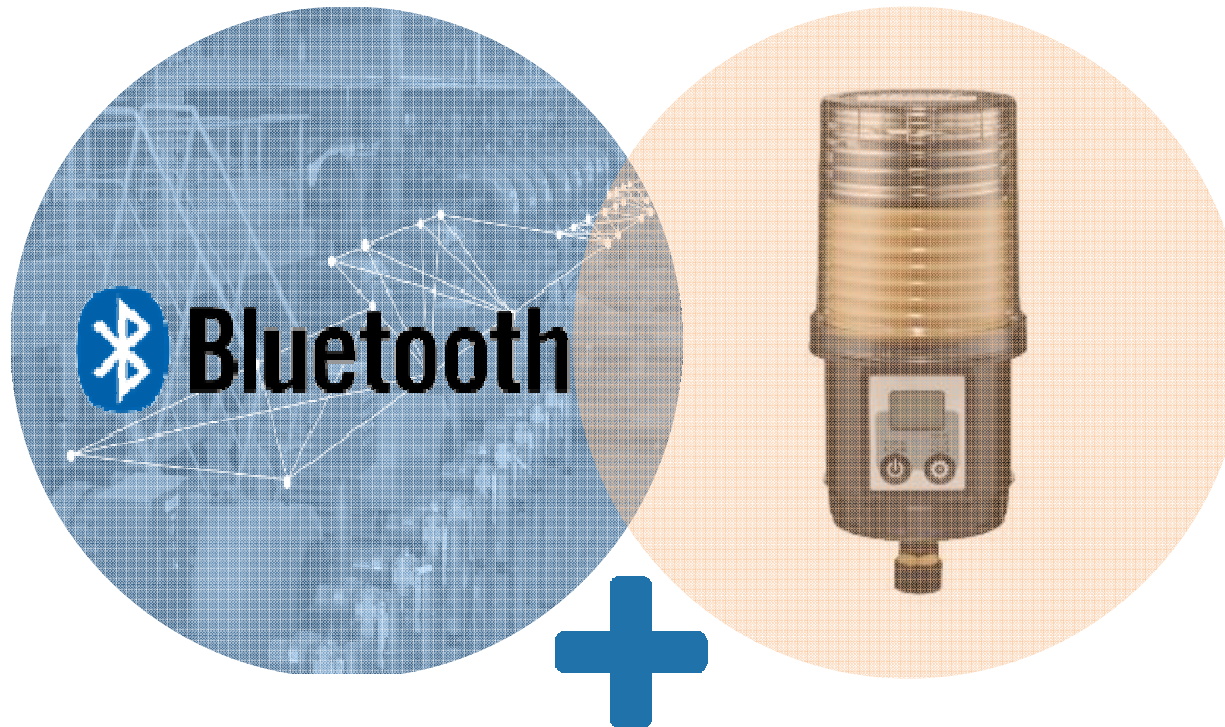


IP65  
KC, CE, FCC



Efficient Latest BLE(Bluetooth Low Energy) Module  
Transmission and reception distance: 5 ~ 20m  
(Maximum distance varies depending on radio transmission /  
reception environment)

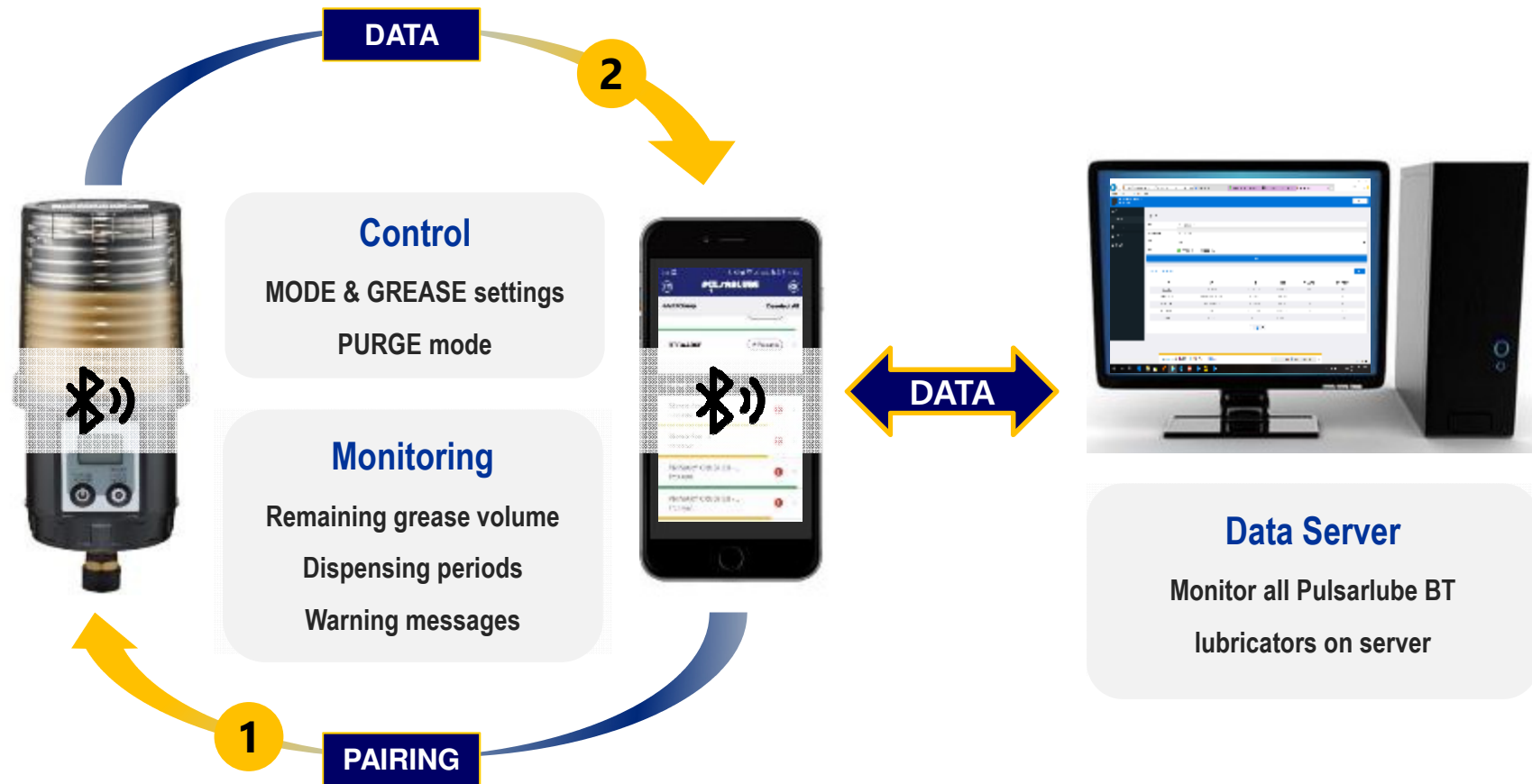
### | What is Pulsarlube BT?



Nearby Communication  
**Bluetooth Technology**

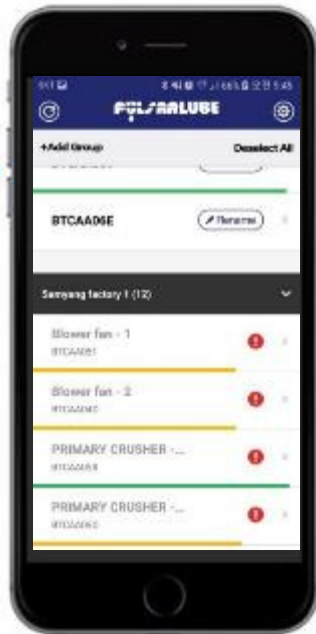
High Performance  
**Pulsarlube Lubricator**

### How Pulsarlube BT works



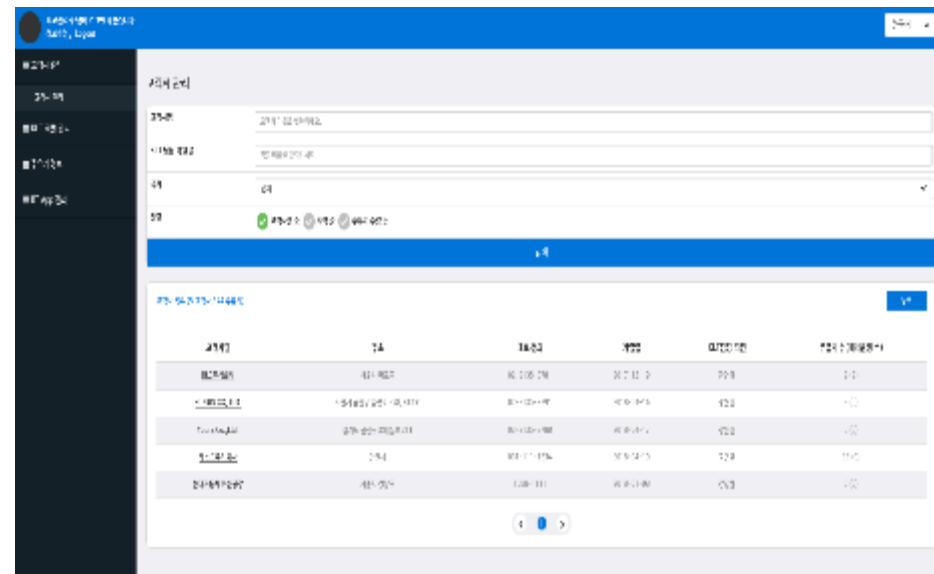


### Pulsarlube BT APP & Admin



Pulsarlube BT Application  
(Android, IOS)

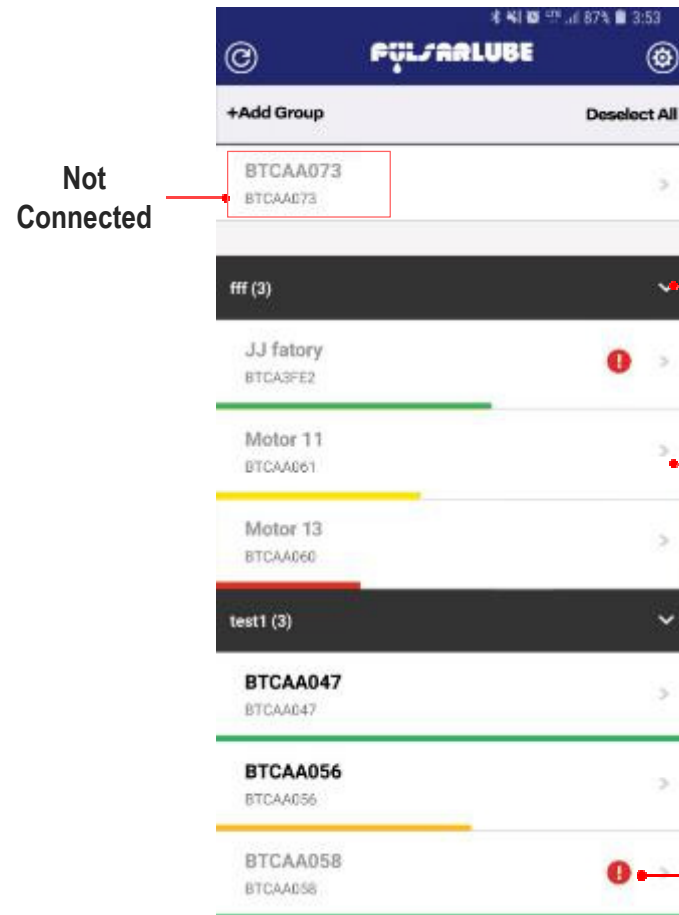
Can be downloaded from App Stores



Pulsarlube BT Admin Server  
(<http://bt.pulsarlube.com>)

Need a customer ID to log in

### Mobile App Details – Main Page

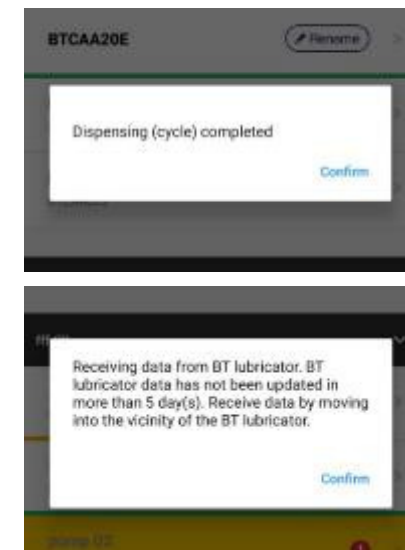


Not  
Connected

Easy to manage multiple  
lubricators by grouping

Remaining Grease  
100-70% **GREEN**  
69~30% **YELLOW**  
Less than 29% **RED**

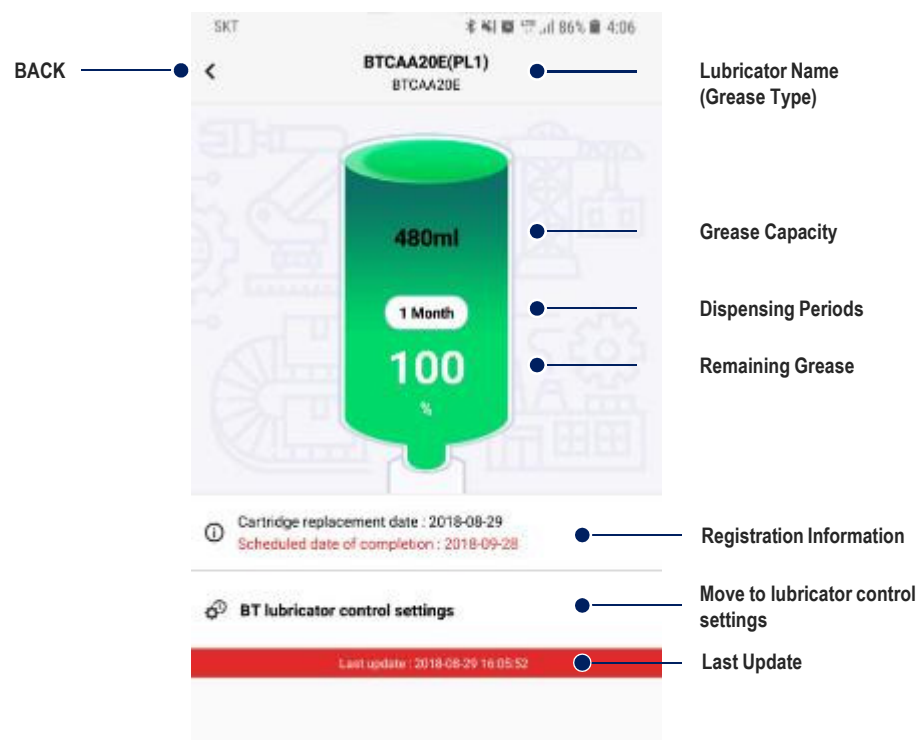
Touch warning icon  
to display detailed message



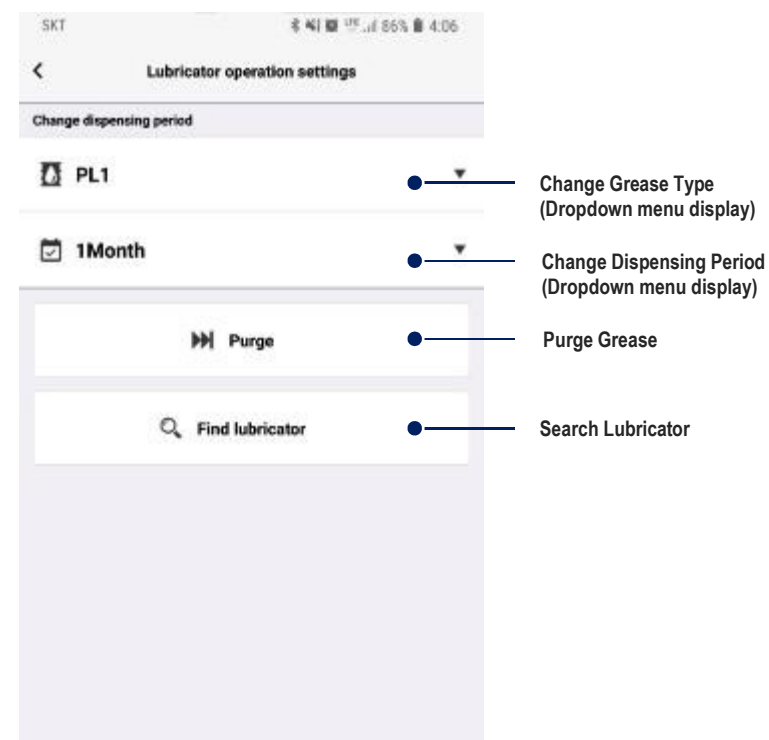


### Mobile App Details – Detail Pages

#### Lubricator Detail Views

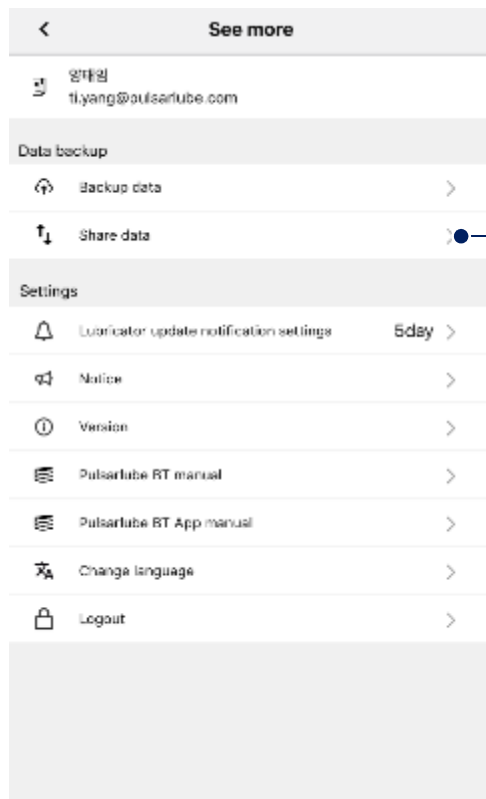


#### Lubricator Operation



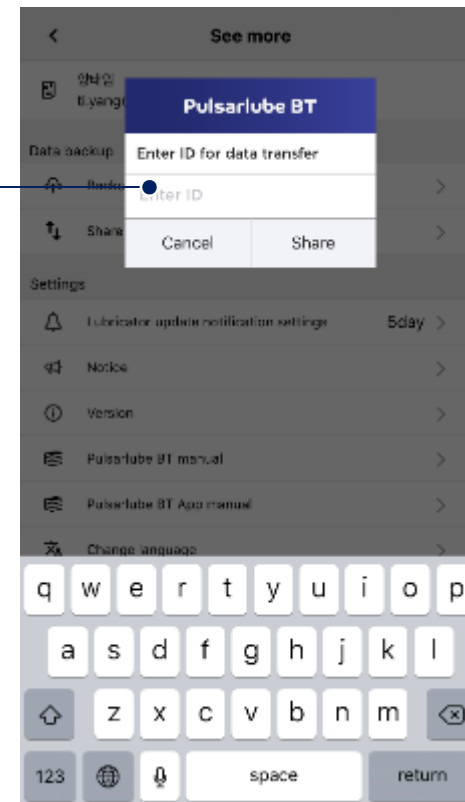
✂ After dispensing completion, an user should reset a lubricator to reset the information on Mobile App  
(Dispensing periods, remaining grease, cartridge replacement, scheduled completion date)

### Mobile App Details – Detail Pages



Enter User ID to  
share App data

To share data with  
the other user



※ When in need of exchanging information between users, simply share DATA on your mobile App



### Server Page

BT Lubricator Information

BT Lubricator information

BT App settings

Group name

Enter group name

Pouch capacity

☒ Total
 ☒ 60ml
 ☒ 120ml
 ☒ 240ml

BT lubricator name

Enter BT lubricator name

Status

☒ Total
 ☒ Normal
 ☒ Warning

Grease type

All

Sort

☒ Sort by group names
 ☒ Sort by product names
 ☒ Sort by last access time
 ☒ Sort by scheduled completion date

Search

Lubricator (Total 53 units, Warning 0 units, 60ml 1 unit, 120ml 34 units, 240ml 13 units)

Export to excel

Customer name	Group name▼	BT ID	Lubricator name▼	Grease type	Pouch capacity	Status	Last access time▼	First registration date	Cartridge replacement date	Month	Remaining amount	Scheduled completion date▼
테스트주식회사	남양주 안원1공장	BTCAAG08	1차 파생기용 파충(코제)	PL14	120ml	Normal	2018-08-22 16:28	2018-05-05	2018-05-15	12	73%	2019-07-08
테스트주식회사		BTCAAG43	1차 파생기용 파충	-	120ml	Normal	2018-09-07 09:31	2018-05-07	2018-05-04	4	28%	2018-11-13
테스트주식회사	충청 1공장 추가	BTCAA1D5	AH1 P702 1	PI05	120ml	Normal	2018-09-06 11:17	2018-05-05	2018-05-05	12	88%	2019-05-04
테스트주식회사	충청 1공장 추가	BTCAA1FB	AH1 P702 2	PI05	120ml	Normal	2018-09-06 11:17	2018-05-05	2018-05-05	12	88%	2019-05-04
테스트주식회사	충청 1공장 추가	BTCAA1D6	AH1 P704 1	PI05	120ml	Normal	2018-09-06 11:17	2018-05-05	2018-05-05	12	88%	2019-05-04
테스트주식회사	충청 1공장 추가	BTCAA1FB	AH1 P704 2	PI05	120ml	Normal	2018-09-06 11:17	2018-05-05	2018-05-05	12	88%	2019-05-04
테스트주식회사	충청 1공장 추가	BTCAA1F2	AH1 P705 1	PI05	120ml	Normal	2018-09-06 11:17	2018-05-05	2018-05-05	12	88%	2019-05-04
테스트주식회사	충청 1공장 추가	BTCAA1FB	AH1 P705 2	PI05	120ml	Normal	2018-09-06 11:17	2018-05-05	2018-05-05	12	88%	2019-05-04
테스트주식회사	충청 1공장 추가	BTCAA219	A10 U201 1	PI05	120ml	Normal	2018-09-06 11:09	2018-05-05	2018-05-05	12	88%	2019-05-05
테스트주식회사	충청 1공장 추가	BTCAA21B	A10 U201 2	PI05	120ml	Normal	2018-09-06 11:09	2018-05-05	2018-05-05	12	88%	2019-05-04

<

1

2

3

4

5

6

>

※ You can monitor all users' lubricators status on PC.  
(To log in, please ask for customer ID)

### How to use BT APP



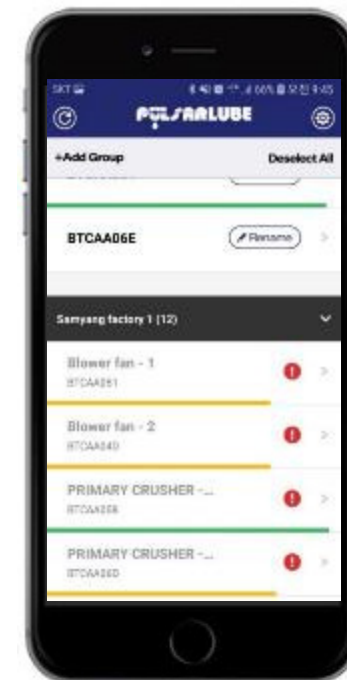


### Pulsarlube BT Application 01

#### Factory with closely clustered lube points



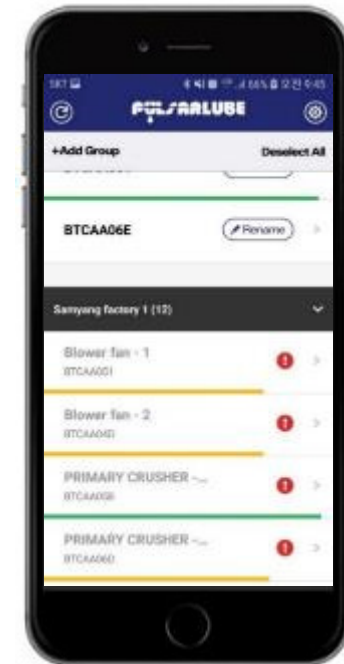
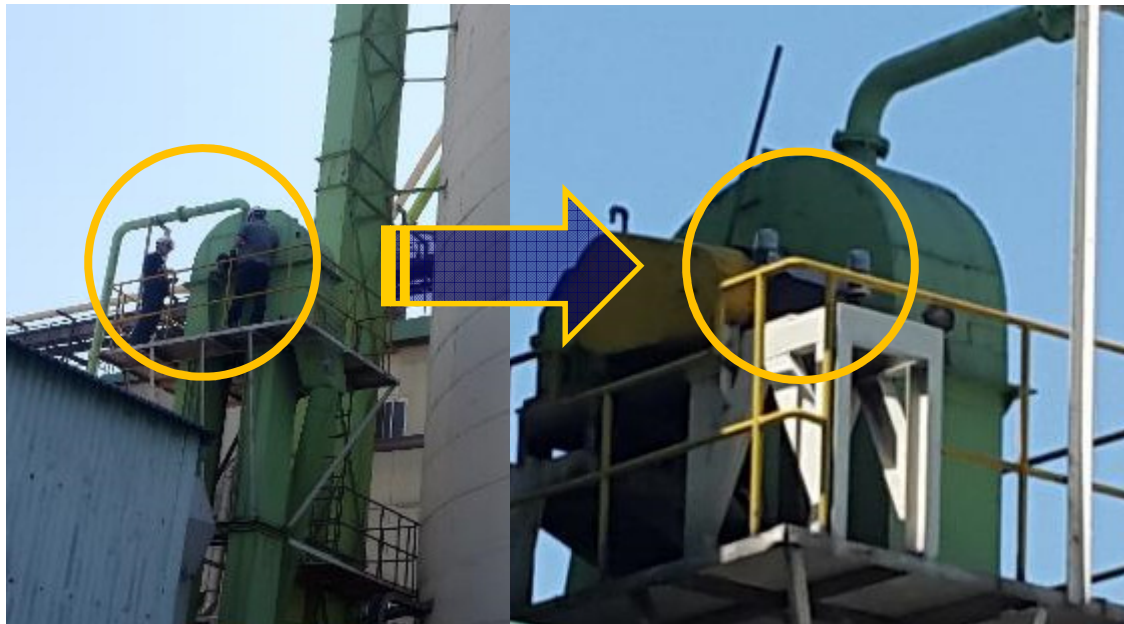
App scans about  
2 – 5 secs for  
nearby lubricators



Easy maintenance by monitoring multiple lubricators within 5~20m at once (maximum distance varies depending on reception environment)

### Pulsarlube BT Application 02

Working at height and in isolated places

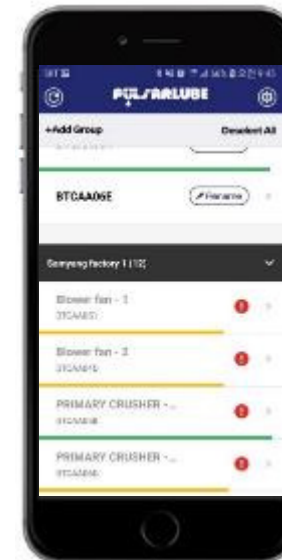


No safety concerns by remotely monitoring the operating status of BT units in safe areas



### Pulsarlube BT Application 03

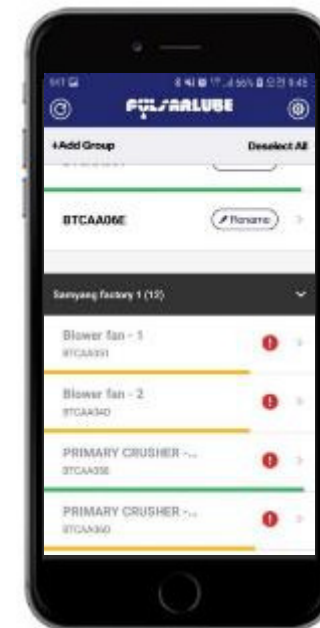
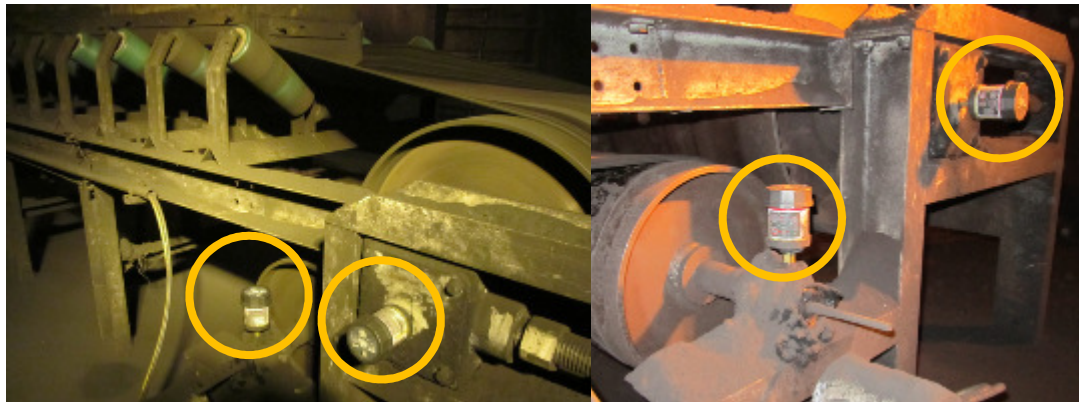
Limited access to lubrication points due to operating equipment



No need to shut down by handy remote mode settings still in operation

### Pulsarlube BT Application 04

#### Harmful and dusty environment



Minimizing labor in harmful and dusty environment such as cement and mining industry with BT App

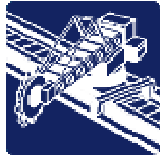




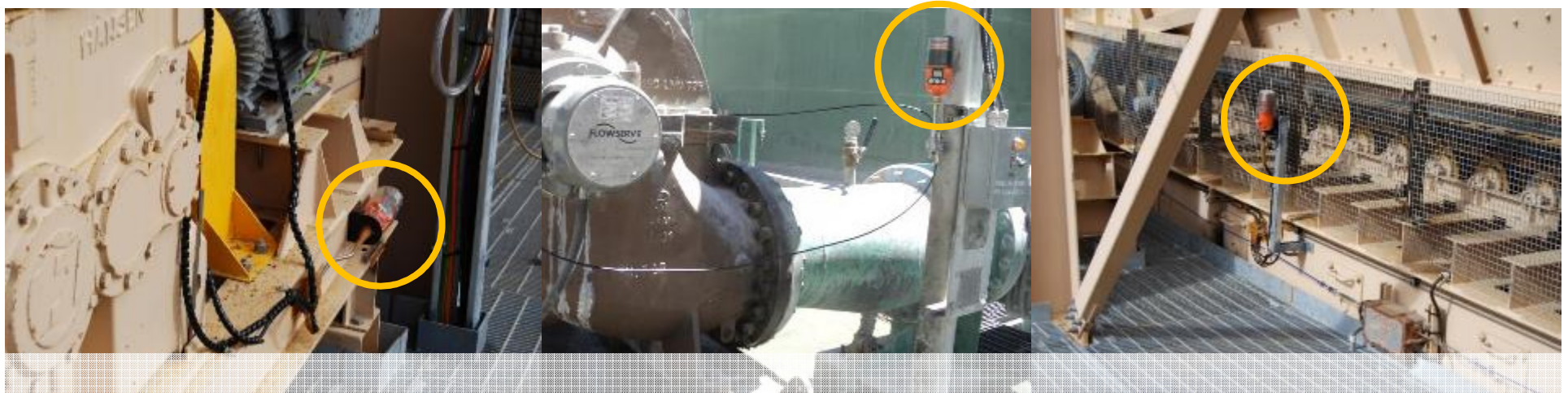
## Pulsarlube applications





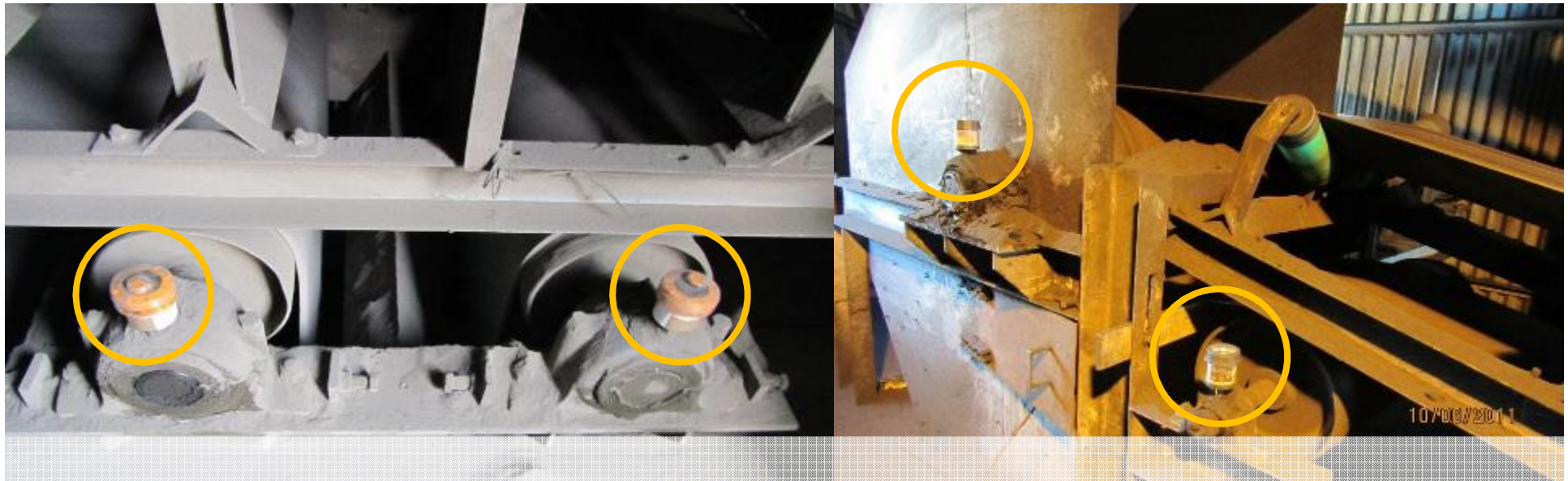


## Mining

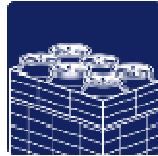




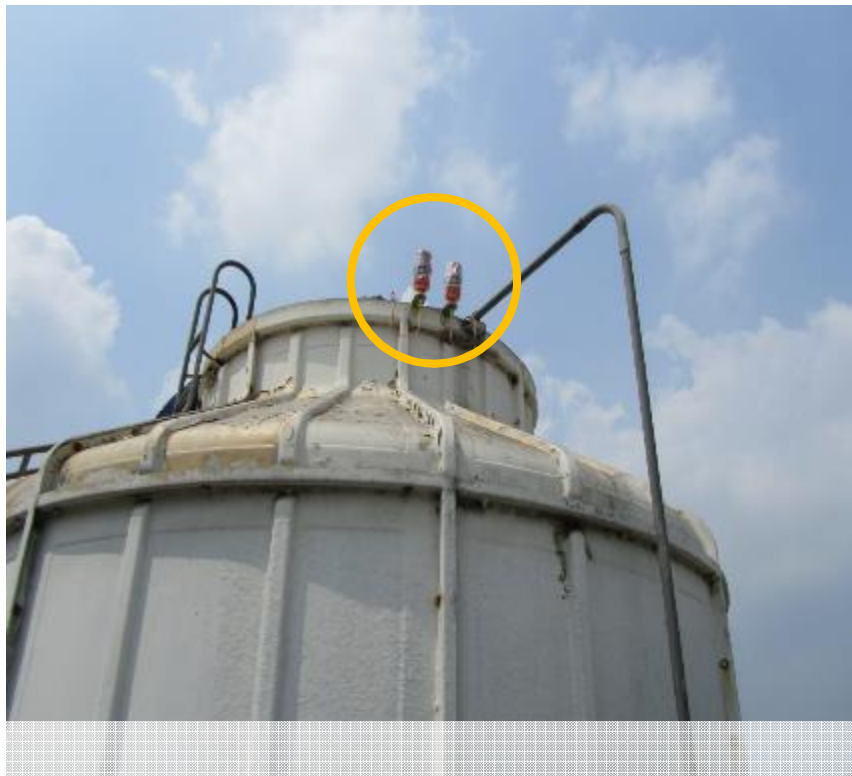
## Mining & Cement Conveyors







## Cooling Towers





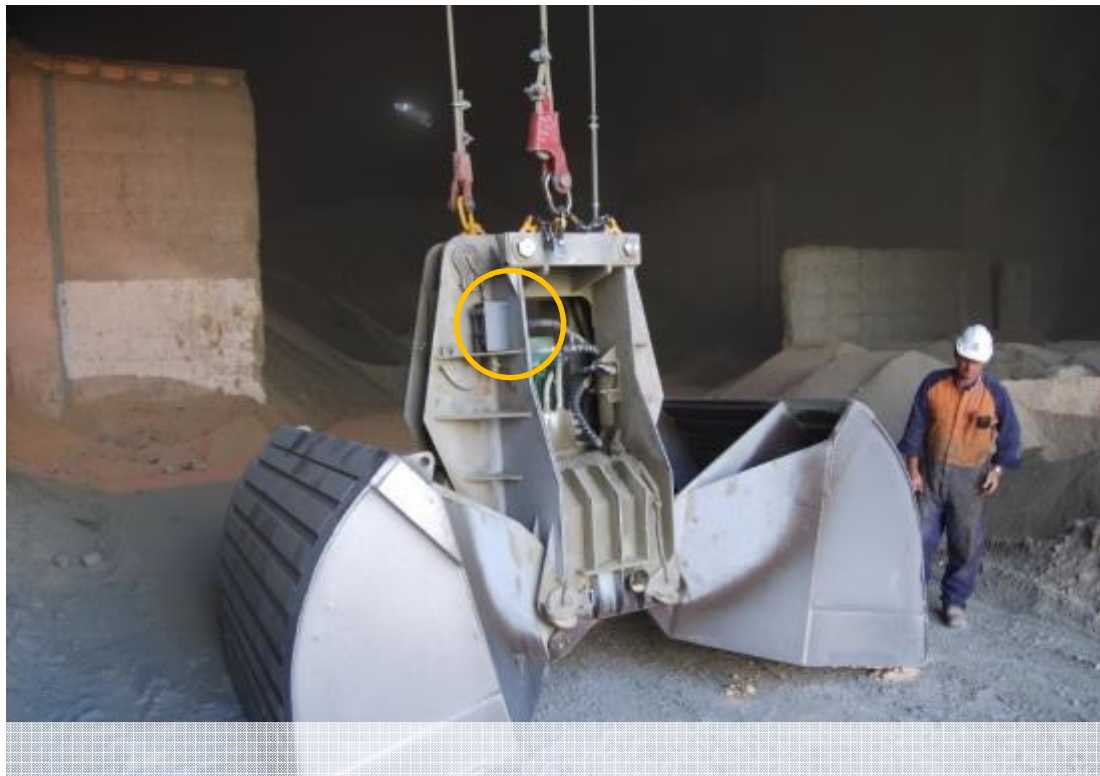
## Harbor Unloading Cranes



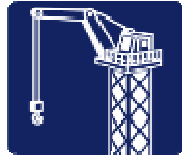




## Clamshell Buckets







## Gantry Cranes





### Fans





### Food Facility Stirrer







### Linear Motion Guide



**Pulsarlube BT** 

---

THANK YOU