

**POMPE GRUPPO
PUMPS GROUP**

1

Dati tecnici / Technical data

Grandezza Size	Cilindrata Displacement [cm ³ /rev] (in ³ /rev)	Pressione max. d'esercizio Max. working pressure			Velocità max. Max. speed [g/min] (rpm)	Portata max. Max. flow [l/min] (Gal/min)	Velocità min. Min. speed [g/min] (rpm)	Portata min. Min. flow [l/min] (Gal/min)	Dimensioni Dimensions		Massa Mass [Kg] (lbs)	Rendimento volumetrico min. Min. volumetric efficiency %
		P1 [bar] (PSI)	P2 [bar] (PSI)	P3 [bar] (PSI)					A [mm] (inch)	B [mm] (inch)		
1SP A0.9	0.89 (0.05)	240 (3480)	260 (3770)	290 (4205)	6000	5.3 (1.40)	600	0.49 (0.13)	34.80 (1.370)	73.6 (2.898)	0.91 (2.01)	92*
1SP A1.2	1.18 (0.07)	240 (3480)	260 (3770)	290 (4205)	6000	7.1 (1.88)	600	0.65 (0.17)	35.35 (1.392)	74.7 (2.941)	0.93 (2.05)	
1SP A1.6	1.6 (0.10)	240 (3480)	260 (3770)	290 (4205)	6000	9.6 (2.54)	400	0.61 (0.16)	36.20 (1.425)	76.4 (3.008)	0.95 (2.09)	
1SP A2.0	2.0 (0.12)	220 (3190)	250 (3625)	270 (3915)	5500	11 (2.91)	400	0.76 (0.20)	36.95 (1.455)	77.9 (3.067)	0.97 (2.14)	
1SP A2.5	2.5 (0.15)	220 (3190)	250 (3625)	270 (3915)	5000	12.5 (3.30)	400	0.95 (0.25)	37.95 (1.494)	79.9 (3.146)	1.00 (2.21)	95*
1SP A3.2	3.2 (0.20)	210 (3045)	240 (3480)	260 (3770)	4500	14.4 (3.80)	400	1.21 (0.32)	39.30 (1.547)	82.6 (3.252)	1.04 (2.29)	
1SP A3.7	3.7 (0.23)	210 (3045)	240 (3480)	260 (3770)	4000	14.8 (3.91)	400	1.40 (0.37)	40.30 (1.587)	84.6 (3.331)	1.07 (2.36)	
1SP A4.2	4.2 (0.26)	190 (2755)	210 (3045)	230 (3335)	3500	14.7 (3.88)	400	1.60 (0.42)	41.25 (1.624)	86.5 (3.406)	1.10 (2.43)	
1SP A5.0	5.0 (0.31)	180 (2610)	210 (3045)	230 (3335)	3000	15 (3.96)	400	1.90 (0.50)	42.80 (1.685)	89.6 (3.528)	1.14 (2.51)	
1SP A6.3	6.3 (0.38)	170 (2465)	190 (2755)	210 (3045)	2700	17 (4.49)	400	2.39 (0.63)	45.35 (1.785)	94.7 (3.728)	1.22 (2.69)	
1SP A7.8	7.76 (0.47)	170 (2465)	190 (2755)	210 (3045)	2500	19.4 (5.13)	400	2.95 (0.78)	48.20 (1.898)	100.4 (3.953)	1.30 (2.87)	
1SP A9.8	9.78 (0.60)	150 (2175)	170 (2465)	190 (2755)	2000	19.6 (5.18)	400	3.71 (0.98)	52.15 (2.053)	108.3 (4.264)	1.41 (3.11)	

* (Valori rilevati in fase di collaudo a 1500 giri/min / Value collected during the testing at 1500 rpm)

Esempio di ordinazione in codice / Example of ordering code

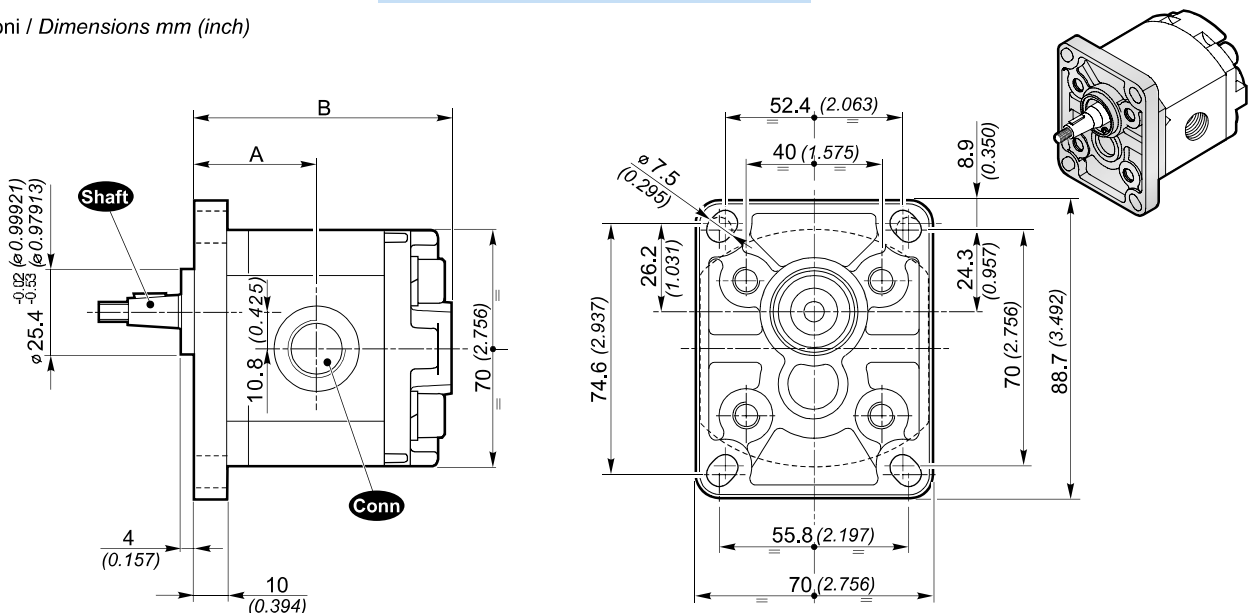
1SP A 2.0 D (H) - 10 GG 0 (VT)

1SP	Tipo pompa / Pump type	vedi tabella / see table
A	Materiale flangia e coperchio / Flange and cover material	A = Alluminio / Aluminium
2.0	Cilindrata / Displacement	vedi tabella / see table
D	Rotazione destra / Clockwise rotation	D = Rotazione destra / Clockwise rotation S = Rotazione sinistra / Anticlockwise rotation
(H)	Anello di rinforzo per piccola pressione in aspirazione Stiffening seal for low suction pressure	(a richiesta / optional)
—⁽¹⁾	Flangia standard / Standard flange	
10	Tipo albero / Shaft type	10 - 11 - 13 - 14 - 15 - 27
GG	Tipo connessioni / Connections type	GG - NN - TT - UU - NG - TG - UG
0	Posizione connessioni / Connections positions	0 - 1 - 3 - 4
(VT)	Opzioni / Optional	(VT) Guarnizione in Viton (a richiesta) Viton seals (optional) VLP-I (N) Valvola limitatrice di pressione (pag. A-27) Pressure relief valve (page A-27)

⁽¹⁾ Non è necessario indicare la flangia STANDARD / It is not necessary indicate STANDARD flange

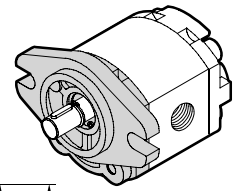
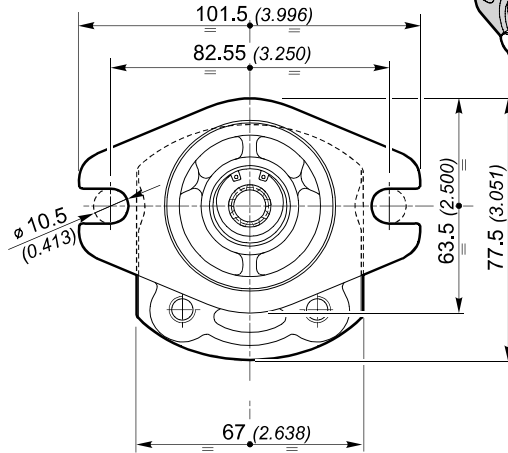
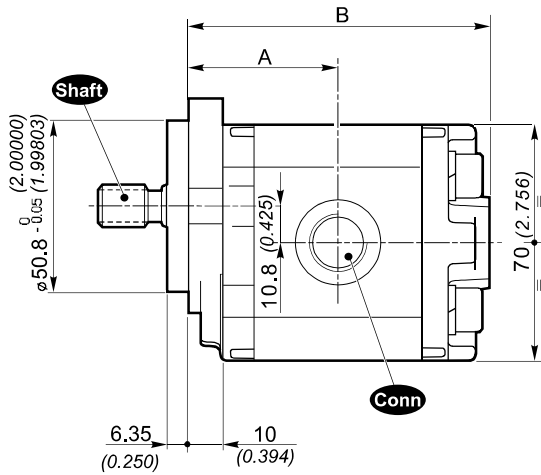
Standard

Dimensioni / Dimensions mm (inch)



SAE AA

Dimensioni / Dimensions

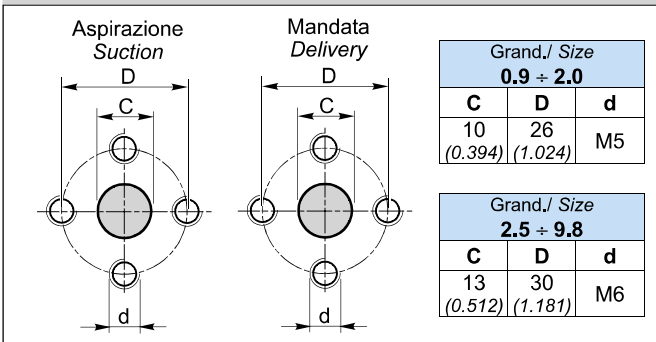


POMPE GRUPPO
PUMPS GROUP

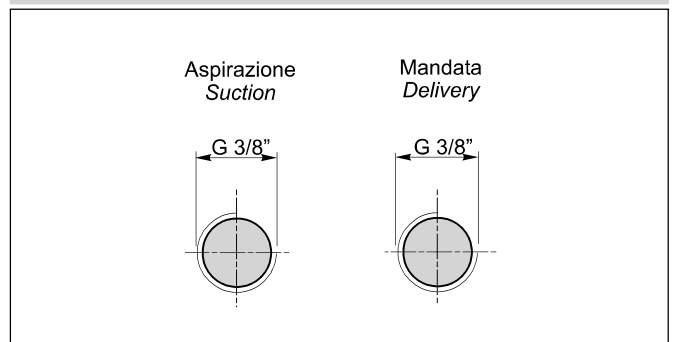
1

CONNESSIONI / CONNECTIONS

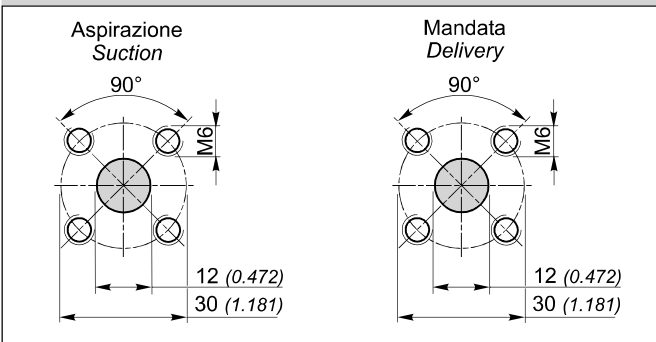
NN



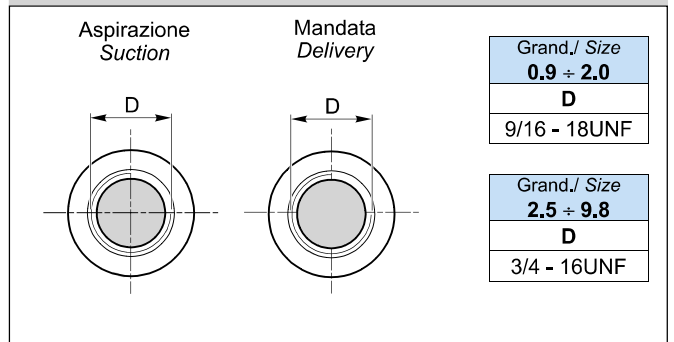
GG



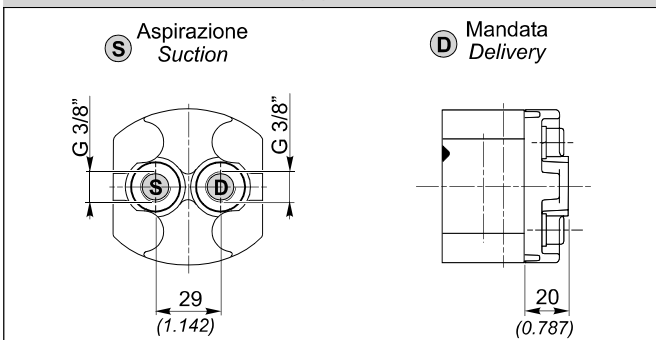
TT



UU



GG4



**POMPE GRUPPO
PUMPS GROUP**

2

Standard

**Flangia e coperchio in Alluminio
Flange and cover in Aluminium**

Dati tecnici / Technical data

Grandezza Size	Cilindrata Displacement [cm ³ /rev] (in ³ /rev)	Pressione max. d'esercizio Max. working pressure			Velocità max. Max. speed [g/min] (rpm)	Portata max. Max. flow [l/min] (Gal/min)	Velocità min. Min. speed [g/min] (rpm)	Portata min. Min. flow [l/min] (Gal/min)	Dimensioni Dimensions		Massa Mass [Kg] (lbs)	Rendimento volumetrico min. Min. volumetric efficiency %
		P1 [bar] (PSI)	P2 [bar] (PSI)	P3 [bar] (PSI)					A [mm] (inch)	B [mm] (inch)		
2SP A4	4 (0.24)	250 (3625)	270 (3915)	290 (4205)	4000	16 (4.23)	500	1.9 (0.50)	44.4 (1.748)	93 (3.661)	2.30 (5.07)	95*
2SP A6	6 (0.37)	250 (3625)	270 (3915)	290 (4205)	4000	24 (6.34)	500	2.85 (0.75)	46 (1.811)	96.3 (3.791)	2.45 (5.40)	
2SP A8	8.5 (0.52)	250 (3625)	270 (3915)	290 (4205)	3500	29.7 (7.85)	500	4.03 (1.06)	48.1 (1.894)	100.5 (3.957)	2.60 (5.73)	
2SP A11	11 (0.67)	250 (3625)	270 (3915)	290 (4205)	3500	38.5 (10.17)	500	5.22 (1.38)	50.2 (1.976)	104.6 (4.118)	2.70 (5.95)	
2SP A14	14 (0.85)	250 (3625)	270 (3915)	290 (4205)	3500	49 (12.95)	500	6.65 (1.76)	52.7 (2.075)	109.6 (4.315)	2.80 (6.17)	
2SP A16	16.5 (1.01)	230 (3335)	240 (3480)	250 (3625)	3500	57.7 (15.24)	500	7.83 (2.07)	54.8 (2.157)	113.8 (4.480)	2.95 (6.51)	
2SP A19	19.5 (1.19)	210 (3045)	220 (3190)	230 (3335)	3300	64.3 (16.99)	500	9.26 (2.45)	57.3 (2.256)	118.8 (4.677)	3.10 (6.84)	
2SP A22	22.5 (1.37)	190 (2755)	200 (2900)	210 (3045)	2800	63 (16.64)	500	10.68 (2.82)	59.8 (2.354)	123.8 (4.874)	3.25 (7.17)	
2SP A26	26 (1.59)	170 (2465)	180 (2610)	190 (2755)	2500	65 (17.17)	500	12.35 (3.26)	62.7 (2.469)	129.6 (5.102)	3.40 (7.50)	

* (Valori rilevati in fase di collaudo a 1500 giri/min / Value collected during the testing at 1500 rpm)

Esempio di ordinazione in codice / Example of ordering code

2SP A 14 D (H) - 10 G (VT)

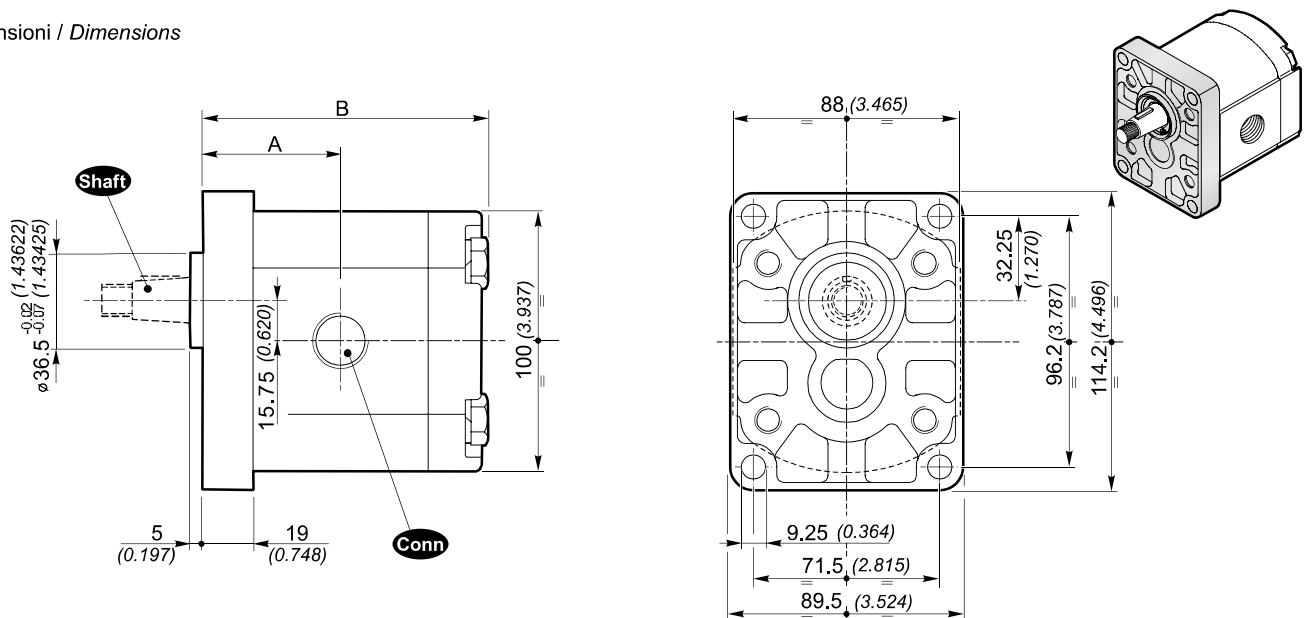
2SP	Tipo pompa / Pump type	vedi tabella / see table
A	Flangia e coperchio / Flange and cover	A = Alluminio / Aluminium
14	Cilindrata / Displacement	vedi tabella / see table
D	Rotazione destra / Clockwise rotation	D = Rotazione destra / Clockwise rotation S = Rotazione sinistra / Anticlockwise rotation
—⁽¹⁾	Tipo flangia / Flange type	
(H)	Anello di rinforzo per piccola pressione in aspirazione Stiffening seal for low suction pressure	(a richiesta / optional)
—		
10	Tipo albero / Shaft type	10 - 11 - 12 - 13 - 14 - 15 - 16
G	Tipo connessioni / Connections type	G - N - T - M - U - W - F
(VT)	Opzioni / Optional	(VT) Guarnizione in Viton (a richiesta) Viton seals (optional) VLP-E (N) Valvola limitatrice di pressione (pag. A-49) Pressure relief valve (page A-49)

⁽¹⁾ Non è necessario indicare la flangia STANDARD / It is not necessary indicate STANDARD flange

**Flangia e coperchio in Alluminio
Flange and cover in Aluminium**

Standard

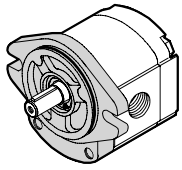
Dimensioni / Dimensions



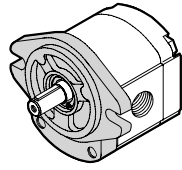
Flangia e coperchio in Alluminio
Flange and cover in Aluminium

SAE A , SAE A-OR

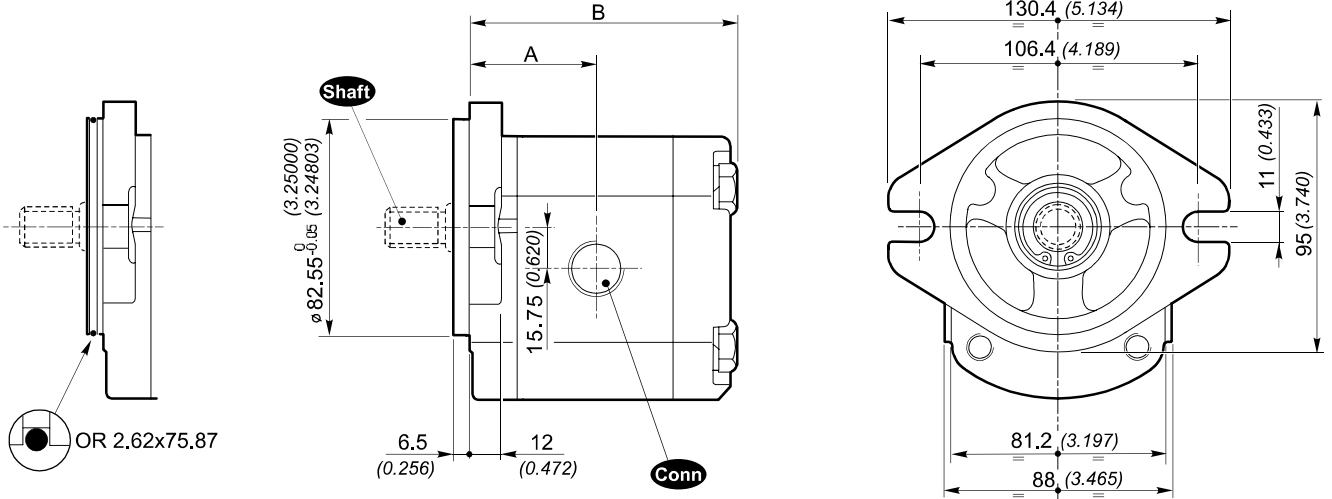
Dimensioni / Dimensions



SAE A-OR

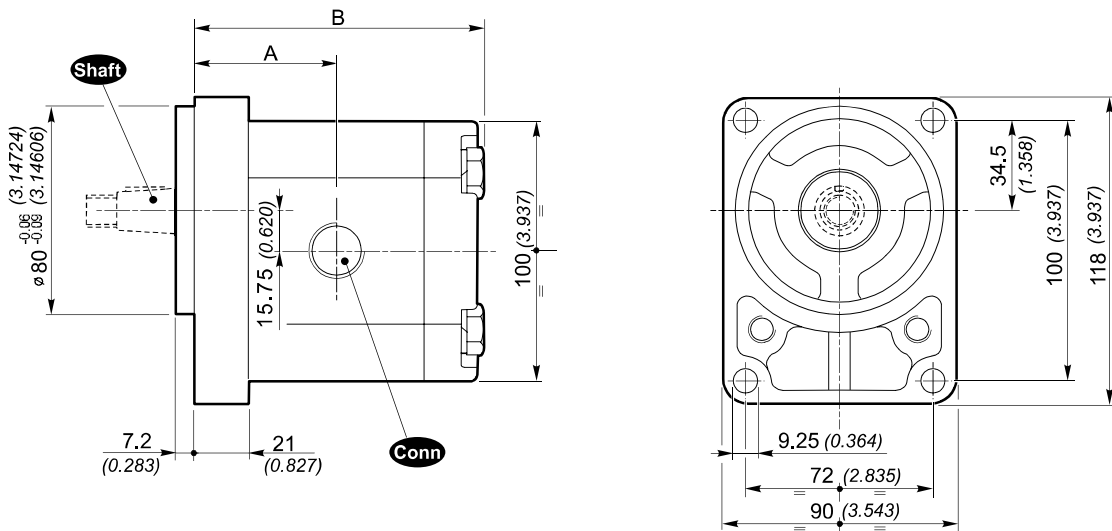


SAE A



B80C

Dimensioni / Dimensions



POMPE GRUPPO
PUMPS GROUP

2

CONNESSIONI / CONNECTIONS

G

Aspirazione
Suction

Mandata
Delivery

Grand./ Size	
4 ÷ 8	
C	G 1/2"

Grand./ Size	
11 ÷ 26	
C	G 3/4"

N

Aspirazione
Suction

Mandata
Delivery

Grand./ Size		
4 ÷ 8		
C	D	d
13 (0.512)	30 (1.181)	M6

Grand./ Size		
11 ÷ 26		
C	D	d
19 (0.748)	40 (1.575)	M8

T

Aspirazione
Suction

Mandata
Delivery

M

Aspirazione
Suction

Mandata
Delivery

Grand./ Size	
11 ÷ 26	
C	D
19 (0.748)	40 (1.575)

U

Aspirazione
Suction

Mandata
Delivery

Grand./ Size	
4 ÷ 8	
C	7/8 14UNF

Grand./ Size	
11 ÷ 26	
C	1" 1/16 12UN

W

Aspirazione
Suction

Mandata
Delivery

F

Aspirazione
Suction

Mandata
Delivery

Grand./ Size		
4 ÷ 11		
C	D	E
20 (0.787)	38 (1.496)	17.4 (0.685)

Grand./ Size		
14 ÷ 26		
C	D	E
26 (1.024)	22.4 (0.882)	47.6 (1.874)

**POMPE GRUPPO
PUMPS GROUP**

3

Standard

**Flangia e coperchio in Alluminio
Flange and cover in Aluminium**

Dati tecnici / Technical data

Grandezza Size	Cilindrata Displacement [cm ³ /rev] (in ³ /rev)	Pressione max. d'esercizio Max. working pressure			Velocità max. Max. speed [g/min] (rpm)	Portata max. Max. flow [l/min] (Gal/min)	Velocità min. Min. speed [g/min] (rpm)	Portata min. Min. flow [l/min] (Gal/min)	Dimensioni Dimensions		Massa Mass [Kg] (lbs)	Rendimento volumetrico min. Min. volumetric efficiency %
		P1 [bar] (PSI)	P2 [bar] (PSI)	P3 [bar] (PSI)					A [mm] (inch)	B [mm] (inch)		
3SP A19	19 (1.16)	250 (3625)	270 (3915)	300 (4350)	3500	66.5 (17.57)	700	12.64 (3.34)	62.4 (2.457)	128.3 (5.051)	5.23 (11.53)	95*
3SP A22	22.3 (1.36)	240 (3480)	260 (3770)	290 (4205)	3500	78 (20.61)	700	14.83 (3.92)	63.9 (2.516)	131.3 (5.169)	5.36 (11.82)	
3SP A29	29.3 (1.79)	220 (3190)	240 (3480)	260 (3770)	3300	96.7 (25.55)	700	19.48 (5.15)	66.9 (2.634)	137.3 (5.406)	5.64 (12.44)	
3SP A33	32.9 (2.01)	220 (3190)	230 (3335)	260 (3770)	3300	108.6 (28.69)	700	21.88 (5.78)	68.4 (2.693)	140.3 (5.524)	5.78 (12.75)	
3SP A36	36.4 (2.22)	210 (3045)	230 (3335)	250 (3625)	3300	120.1 (31.73)	700	24.21 (6.40)	69.9 (2.752)	143.3 (5.642)	5.91 (13.03)	
3SP A44	43.5 (2.65)	200 (2900)	220 (3190)	240 (3480)	3000	130.5 (34.48)	700	28.93 (7.64)	72.9 (2.870)	149.3 (5.878)	6.19 (13.65)	
3SP A52	51.7 (3.15)	200 (2900)	210 (3045)	240 (3480)	3000	155.1 (40.98)	700	34.38 (9.08)	76.4 (3.008)	156.3 (6.154)	6.50 (14.33)	
3SP A62	61.1 (3.73)	180 (2610)	190 (2755)	200 (2900)	2500	152.7 (40.34)	700	40.63 (10.73)	80.4 (3.165)	164.3 (6.469)	6.87 (15.15)	

* (Valori rilevati in fase di collaudo a 1500 giri/min / Value collected during the testing at 1500 rpm)

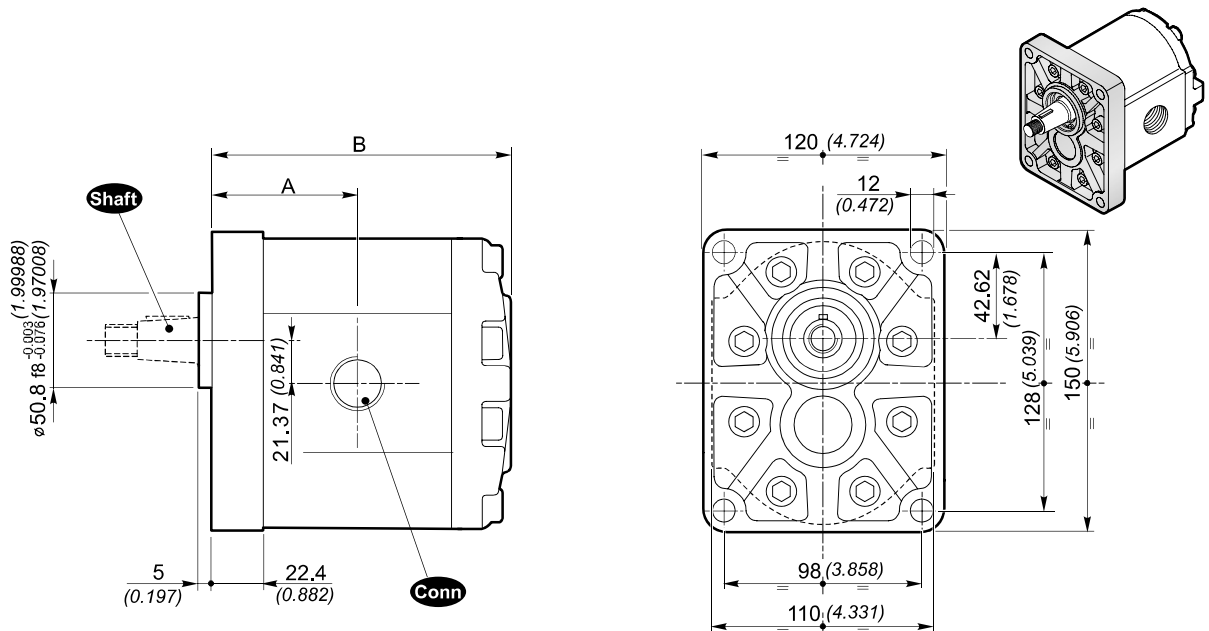
Esempio di ordinazione in codice / Example of ordering code

3SP A 22 D (H) - 10 G (VT)

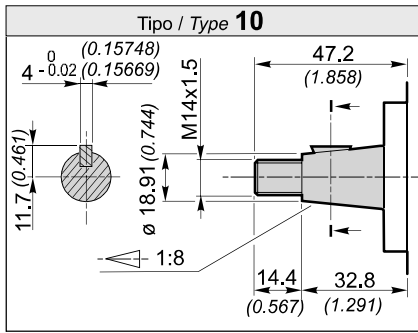
3SP	Tipo pompa / Pump type	vedi tabella / see table
A	Flangia e coperchio / Flange and cover	A = Alluminio / Aluminium
22	Cilindrata / Displacement	vedi tabella / see table
D	Rotazione destra / Clockwise rotation	D = Rotazione destra / Clockwise rotation S = Rotazione sinistra / Anticlockwise rotation
(H)	Anello di rinforzo per piccola pressione in aspirazione Stiffening seal for low suction pressure	(a richiesta / optional)
-		
10	Tipo albero / Shaft type	10 - 13 - 14
G	Tipo connessioni / Connections type	G - N - W - F - T
(VT)	Opzioni / Optional	(VT) Guarnizione in Viton (a richiesta) Viton seals (optional) VLP-I (N) Valvola limitatrice di pressione (pag. A-63) Pressure relief valve (page A-63)

**Flangia e coperchio in Alluminio
Flange and cover in Aluminium**

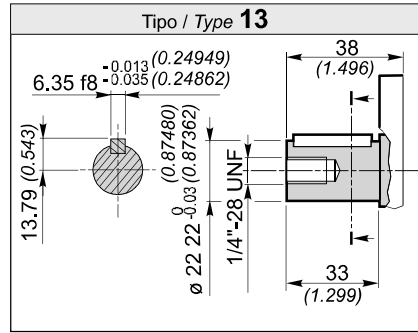
Standard



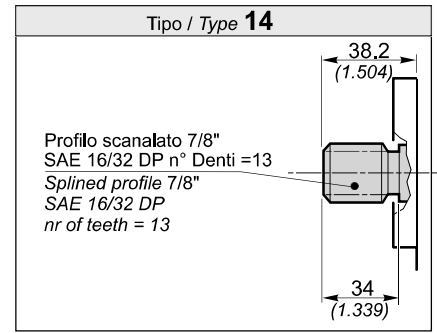
Shaft Alberi disponibili / Available shafts



Coppia 240 Nm / Torque 177 ft-lbs



Coppia 240 Nm / Torque 177 ft-lbs



Coppia 240 Nm / Torque 177 ft-lbs

POMPE GRUPPO
PUMPS GROUP

3

CONNESSIONI / CONNECTIONS

