

液压动力单元型号说明

POWER UNITS ORDERING GUIDANCE



YBZ □-□□□□□□ / □□□□□□

<p>产品名称: 液压动力单元 Product name: hydraulic power units</p>	<p>设计序号由制造厂商确定。例如: 1, 2, 3或A, B, C表示 Design NO., which is selected by manufacturer, may be 1, 2, 3orA, B, C</p>
<p>系列号, 用1, 2, 3, 4...表示动力单元的重大改进 Series No., which would be changed once there comes big improvement of the whole power units. It comes into 1, 2, 3, 4.</p>	<p>泵座型号由制造厂商确定。 Manifold model is selected by manufacturer.</p>
<p>系统溢流阀开启压力 System pressure, which is used to point out the preset pressure of the relief valve. A—1.6Mpa B—2.5Mpa C—6.3Mpa D—10Mpa E—16Mpa F—20Mpa G—25Mpa H—31.5Mpa</p>	<p>电磁阀电压 Solenoid valve volt 12VDC/24VDC/48VDC/110VAC/220VAC</p>
<p>齿轮泵公称排量 Pump rated displacement</p> <p>① CBK 泵 ③ CBE 泵 CBK series pumps; CBE series pumps 0.63ml/r 0.8ml/r 0.32ml/r 1.25ml/r 1.2ml/r 1.6ml/r 0.38ml/r 1.5ml/r 2.1ml/r 2.5ml/r 0.5ml/r 2.7ml/r 3.2ml/r 0.63ml/r 3.7ml/r 4.2ml/r 0.88ml/r 5ml/r 6ml/r 1.00ml/r</p> <p>② CBG 泵 CBG series pumps; 2ml/r 3ml/r 3.5ml/r 4ml/r</p>	<p>油箱外型 Tank appearance</p> <p>A—ϕ120口径, 钢件, 圆, 卧式/caliber ϕ120, steel, round, horizontal B—ϕ120口径, 钢件, 圆, 立式/caliber ϕ120, steel, round, vertical C—ϕ120口径, 钢件, 方, 卧式/caliber ϕ120, steel, square, horizontal D—ϕ120口径, 钢件, 方, 立式/caliber ϕ120, steel, square, vertical E—ϕ138口径, 钢件, 圆, 卧式/caliber ϕ138, steel, round, horizontal F—ϕ138口径, 钢件, 圆, 立式/caliber ϕ138, steel, round, vertical G—ϕ138口径, 钢件, 方, 卧式/caliber ϕ138, steel, square, horizontal H—ϕ138口径, 钢件, 方, 立式/caliber ϕ138, steel, square, vertical J—ϕ94口径, 钢件, 圆, 卧式/caliber ϕ94, steel, round, horizontal K—ϕ94口径, 钢件, 圆, 立式/caliber ϕ94, steel, round, vertical L—ϕ94口径, 钢件, 方, 卧式/caliber ϕ94, steel, square, horizontal M—ϕ94口径, 钢件, 方, 立式/caliber ϕ94, steel, square, vertical P—ϕ120口径, 塑料, 圆, 卧式/caliber ϕ120, plastic, round, horizontal Q—ϕ120口径, 塑料, 圆, 立式/caliber ϕ120, plastic, round, vertical O—没有油箱 /no tank T—特殊要求的油箱 /the tank with Special requirements</p>
<p>油箱容量 Oil tank capacity</p> <p>U—0.5L Z—2.0L E—12L J—25L V—0.8L A—3.0L F—14L K—35L W—1.0L B—5Lor6L G—16L L—50L S—1.4L C—8.0L H—20L Y—1.5L D—10L I—22L</p>	<p>电机转速 Motor speed</p> <p>O—系统中不含电机 /hydraulic system in the non-motor T—特殊要求的电机 /the motor with Special requirements</p> <p>① 50HZ 交流电机 AC motor, 50HZ A—960rpm B—1400rpm C—2800rpm D—1400/2800rpm ② 60HZ 交流电机 AC motor, 60HZ J—1100rpm K—1750rpm L—3450rpm ③ 直流电机 DC motor U—2500rpm V—3500rpm W—4500rpm</p>
<p>电机电压 Motor voltage</p> <p>① 直流电机 DC motor: 1—12V 2—24V 9—48V ② 交流电机 AC motor: 3—220V, 单相 single phase 4—380V, 三相 three phase 5—110V, 单相 single phase 6—415V, 三相 three phase</p>	<p>电机类型 Motor type</p> <p>O—系统中不含电机 /no motor T—特殊要求的电机 /the motor with Special requirements</p> <p>① 交流电机 AC motor A—钢板外壳, 立卧两用 Steel crust, vertical & horizontal B—钢板外壳, 立式 Steel crust, vertical G—铝挤压外壳, 立卧两用 Aluminum profile crust, vertical & horizontal H—铝挤压外壳, 立式 Aluminum profile crust, crust, vertical L—压铸铝外壳, 立卧两用 Casting aluminium crust, vertical & horizontal M—压铸铝外壳, 立式 Casting aluminium crust, crust, vertical N—铸铁外壳, 立卧式 Cast iron crust, crust, vertical</p> <p>② 直流电机 DC motor U—3 "直流电机 3 "DC motor V—3.5 "直流电机 3.5 "DC motor W—4.5 "直流电机 4.5 "DC motor X—5 "直流电机 5 "DC motor</p>
<p>电机功率 Motor power</p> <p>① 直流电机 DC motor: X—0.25kw S—0.5kw T—0.8kw U—1.0kw V—1.2kw W—1.5kw A—2.0kw B—3.0kw ② 交流电机 AC motor: C—0.37kw D—0.55kw E—0.75kw F—1.1kw G—1.5kw H—2.2kw I—3.0kw J—4.0kw</p>	
<p>液压油路编号, 详细信息见下页液压动力单元液压回路图。 Hydraulic circuit No. See the hydraulic schematic circuit in in following page.</p>	

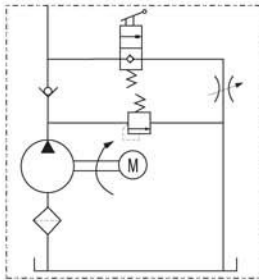
液压动力单元回路图

Hydraulic Schematic Circuit for Power Units

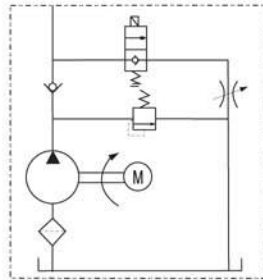


通过不同的液压阀组合，我公司目前已有两百多种液压回路供客户选择，典型的液压回路见下图，我公司还可根据用户要求定制特殊的油路。

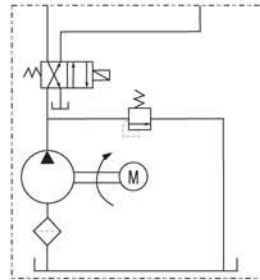
With different combination of the valves, we have more than two hundred hydraulic circuits used in the power units. The typical circuits are shown as follows. We are at your disposal to design and produce the customized circuits.



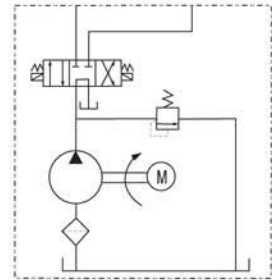
1 #



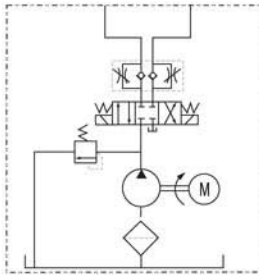
2 #



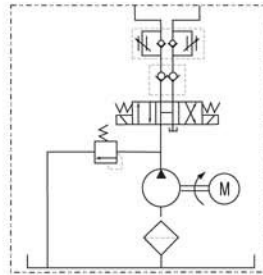
3 #



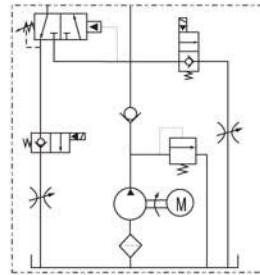
4 #



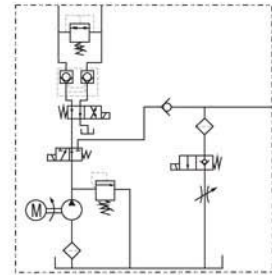
7 #



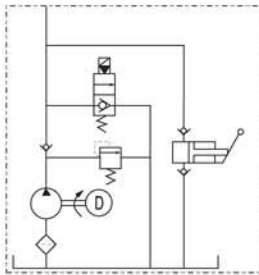
9 #



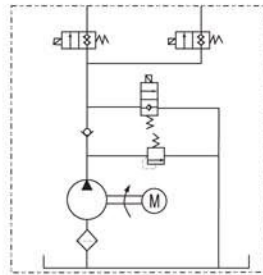
10 #



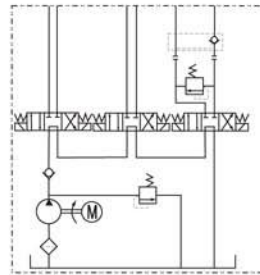
14 #



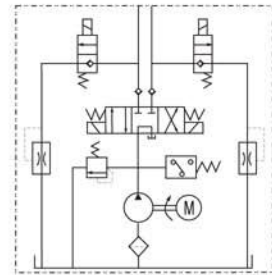
27 #



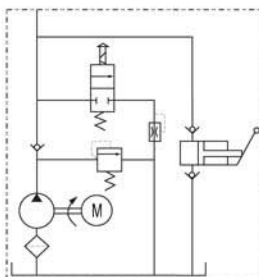
30 #



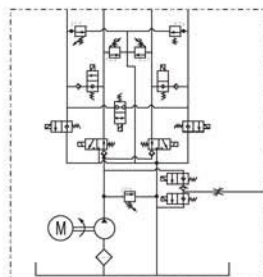
41 #



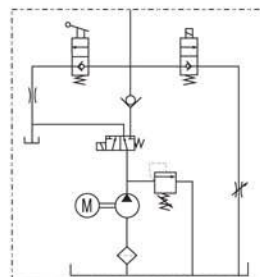
42 #



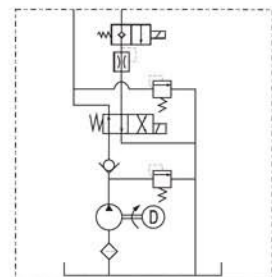
48 #



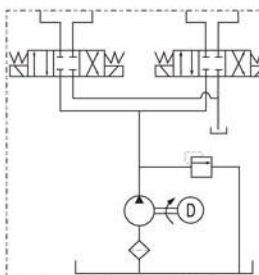
54 #



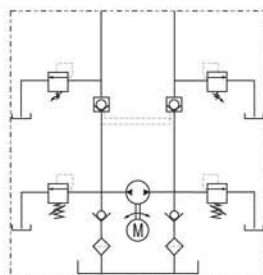
56 #



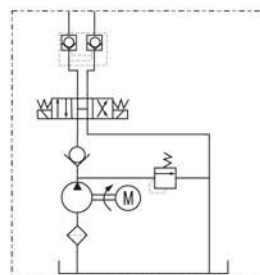
61 #



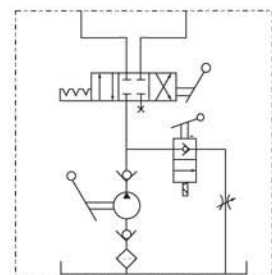
66 #



101 #



209 #



HP

堆高车动力单元 1

FOK LIFT POWER UNITS 1



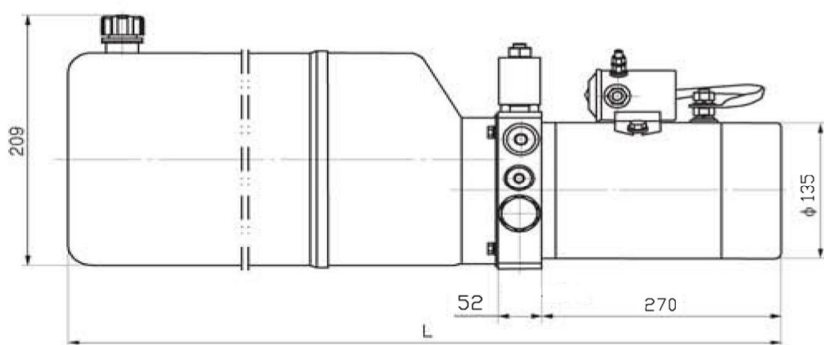
简介 General Description

此液压动力单元由高齿轮油泵、直流电机、多用集成块、液压阀、油箱等零部件有机结合为一体，系典型的动力上升、重力下降液压回路。启动电机，实现上升，打开电磁卸荷阀，实现下降，下降速度由内置平衡阀自动控制。本系列产品是各种堆高车、小型升降平台等物流设备的理想动力源。

Equipped with a high pressure gear pump, a DC motor, a multi-functional manifold, valves and a tank, this power unit has a power up gravity down circuit. Start the motor to lift the machine and the lowering movement is activated by the solenoid valve with the lowering speed controlled by the pressure compensated flow control valve. The power units are widely used in the industry of logistic devices such as fork lift, mini lift table ect.

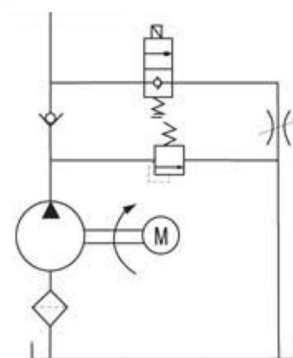


外形尺寸图 Outline Dimension



系统工作原理

Hydraulic Circuit Diagram



型号规格说明 Model Specifications

Model 型号	Motor Volt 电机电压	Motor power 电机功率	Rated Speed 名义转速	Displacement 油泵排量	System pressure 溢流阀压力	Tank Capacity 油箱容量	L (mm)
YBZ-F2.1 B1W2/WUAAG1	12VDC	1.5KW	2500 RPM	2.1mL/r	20MPa	6L	510
YBZ-F2.1 B1 A2/WUAAG1		2KW				6L	510
YBZ-F2.1 B1 B2/WUAAG1		3KW		6L		572	
YBZ-F2.7 B1B2/WUAAG1		3KW		6L		572	
YBZ-F2.1 B1W2/WUAAG1		1.5KW		6L		510	
YBZ-F2.1 B2A2/WUAAG1	24VDC	2KW	2.1mL/r	6L		510	
YBZ-F2.7 B2A2/WUAAG1		2KW	2.7mL/r	6L		510	

Remark: 1. Please go to page 29 or consult our sales engineer for the different pump displacement, motor power or tank capacity.
2. The manual override function is available on request.

注意事项 Special Notes

1. 本动力单元为 S3 工作制，不可连续运转，30 秒开、270 秒停。
2. 按装前必须保证油缸、油管、接头等液压元件清洁无任何杂质粘附。
3. 液压油粘度应为 15~68CST，应清洁无杂质，推荐使用 N46 号液压油。
4. 系统使用第一个 100 小时后，应更换液压油，以后每 3000 小时更换一次液压油。
5. 本液压动力单元适用于水平安装。

1. The duty of this power unit is S3, i.e., 30 seconds on and 270 seconds off.
2. Clean all the hydraulic parts concerned before mounting the power unit
3. The viscosity of the oil should be 15~68 cst.
4. Change the oil after the first 100 hours of using the power unit, then change the oil every 3000 hours.
5. The power unit should be mounted horizontally.

双作用缸动力单元

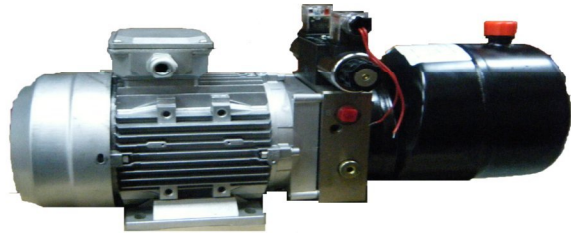
DOUBLE-ACTION CYLINDER POWER UNIT



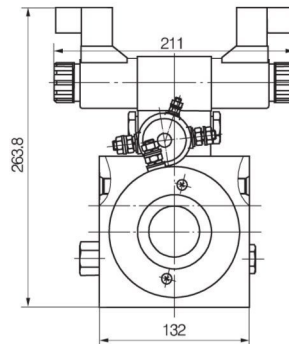
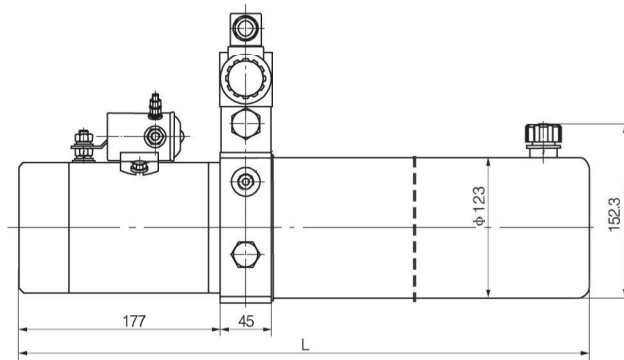
简介 General Description

此动力单元由高压齿轮泵、直流电机、多用集成块、各式液压阀、油箱等零部件有机结合为一体。性能稳定，结构紧凑，广泛应用于汽车，园林机械，机床，物流设备等。

Consisting of gear pump, DC motor, multi-functions manifold, valves, tank, this power unit is for the controlling of a double acting cylinder with a pressure holding characteristic. It is used in the applications of tipper trailer, hydraulic hoist, press, etc.

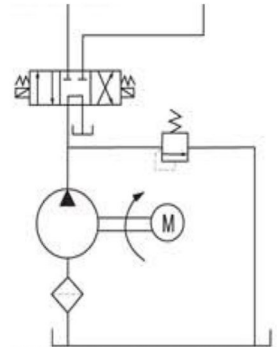


外形尺寸图 Outline Dimension



系统工作原理

Hydraulic Circuit Diagram



型号规格说明 Model Specifications

Model 型号	Motor Volt 电机电压	Motor power 电机功率	Rated Speed 名义转速	Displacement 油泵排量	System pressure 溢流阀压力	Tank Capacity 油箱容量	L(mm)
YBZ-F1.6A4E4/LBAEGI	220V	0.75KW	1450 RPM	1.6mL/r	20MPa	3L	567
YBZ-F2.1B4G4/LBAEGI		1.5KW		2.1mL/r		6L	625.5
YBZ-F3.2B4H4/LBAEGI		2KW		3.2mL/r		6L	625.5

说明：如需不同流量的泵、压力、电机功率等系统参数，请查看液压动力单元型号说明。

Remark: Please go to page 29 or consult our sales engineer for the different pump displacement, motor power or tank capacity.

注意事项 Special Notes

1. 本动力单元为 S3 工作制，不可连续运转，30 秒开、270 秒停。
2. 按装前必须保证油缸、油管、接头等液压元件清洁无任何杂质粘附。
3. 液压油粘度应为 15~68CST，应清洁无杂质，推荐使用 N46 号液压油。
4. 系统使用第一个 100 小时后，应更换液压油，以后每 3000 小时更换一次液压油。
5. 本液压动力单元适用于水平安装。

1. The duty of this power unit is S3, i.e., 30 seconds on and 270 seconds off.
2. Clean all the hydraulic parts concerned before mounting the power unit
3. The viscosity of the oil should be 15~68 cst.
4. Change the oil after the first 100 hours of using the power unit, then change the oil every 3000 hours.
5. The power unit should be mounted horizontally.

升降平台动力单元 1

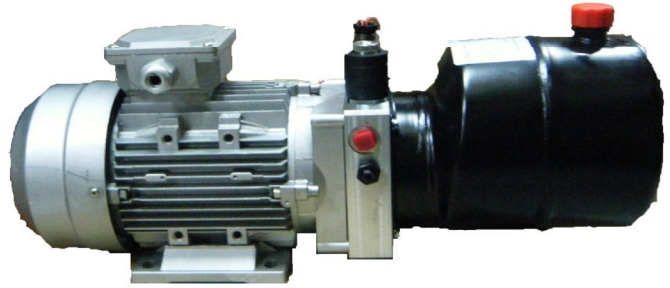
LIFT TABLE POWER UNIT 1



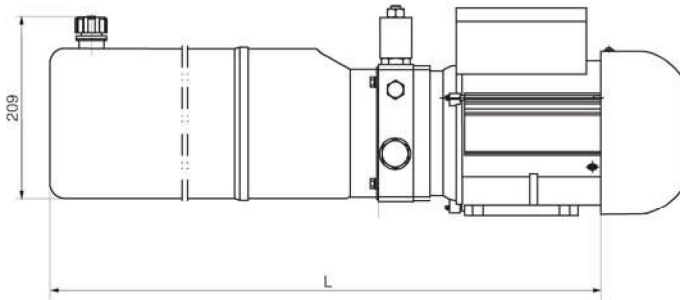
简介 General Description

此液压动力单元由高压齿轮油泵、交流电机、多用集成块、液压阀、油箱等零部件有机结合为一体,应用于轻型升降平台、液压叉车、举升机等设备,电磁卸荷阀卸荷实现下降,下降速度由可调节流阀调节。

Consisting of high pressure gear pump, AC motor, multi-functional manifold, valves, tank, this power unit has been widely used in the industry of logistic devices such as minifork lift, scissors lift and ariel working platform. The lowering movement is controlled by the solenoid valve with the speed controlled by the adjustable throttle valve.

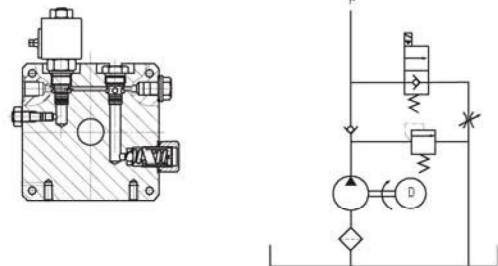


外形尺寸图 Outline Dimension



系统工作原理

Hydraulic Circuit Diagram



型号规格说明 Model Specifications

Model 型号	Motor Volt 电机电压	Motor power 电机功率	Rated Speed 名义转速	Displacement 油泵排量	System pressure 溢流阀压力	Tank Capacity 油箱容量	L (mm)
YBZ-F1.2A4E2/LBABE1	220VAC	0.75KW	1450 RPM	1.2mL/r	20MPa	3.L	495
YBZ-F1.6A4E2/LBABE1				1.6mL/r		3.L	495
YBZ-F2.1B4G2/LBABE1		1.5KW		2.1mL/r		6L	625
YBZ-F3.2B4H2/LBAEGI		2.2KW		3.2mL/r		6L	675

说明: 1. 如需不同流量的泵、压力、电机功率等系统参数, 请查看液压动力单元型号说明。

2. 如需手动应急放油装置, 请在订货时说明。

Remark: 1. Please go to page 29 or consult our sales engineer for the different pump displacement, motor power or tank capacity.

2. The manual override function is available on request.

注意事项 Special Notes

1. 此动力单元不可连续运转 (1 分钟 ON, 9 分钟 OFF), 可重复工作。
2. 按装前必须保证油缸、油管、接头等液压元件清洁无任何杂质粘附。
3. 液压油粘度应为 15~68CST, 应清洁无杂质, 推荐使用 N46 号液压油。
4. 系统使用第一个 100 小时后, 应更换液压油, 以后每 3000 小时更换一次液压油。
5. 本液压动力单元适用于水平安装。

1. The power unit is of S3 duty, which can only be worked intermittently, ie., 1minute on and 9 minutes off.
2. Clean all the hydraulic parts concerned before mounting the power unit
3. The viscosity of the oil should be 15~68 cst.
4. Change the oil after the first 100 hours of using the power unit, then change the oil every 3000 hours.
5. The power unit should be mounted horizontally.