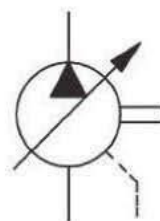


## VP double variable displacement vane pump



Symbol

### ● Characteristic:

- 1, Use precision machining technology, can automatically adjust displacement and complement under setting pressure. Decrease the loss of load power, high efficiency, low temperature, energy saving.
- 2, Low noise, response promptly, high efficiency and steady operation.
- 3, Simple structure, simple operation, easy to maintain.
- 4, Include adjusting screw, can adjust the displacement and pressure randomly, widely apply for lathe machine and shoe making machine, etc.
- 5, Long working life, steady structure, small volume, can connect with motor directly, save space, durability and so on.

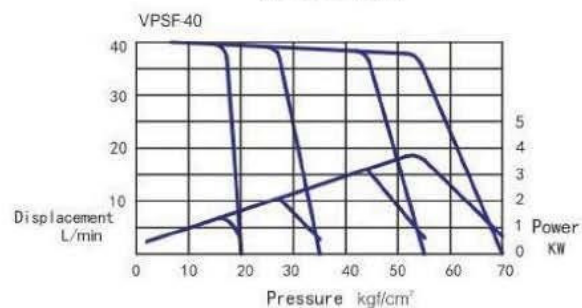
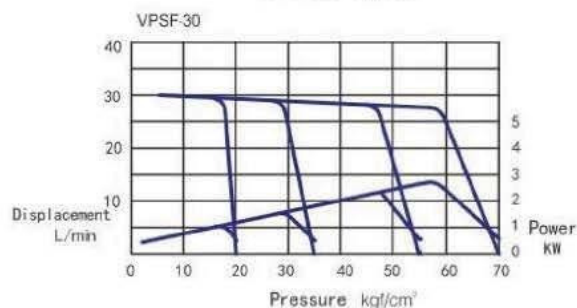
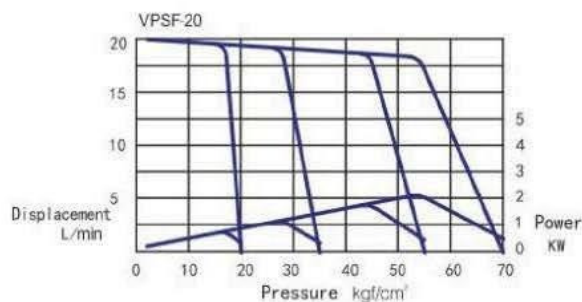
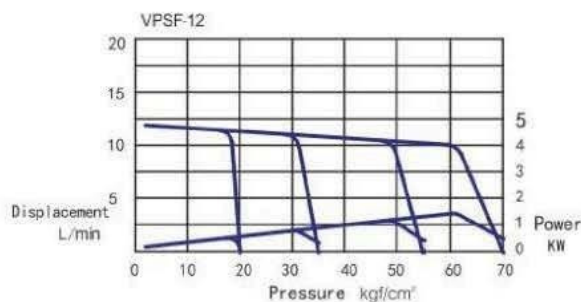
### ● VP type single pump model description:

VPSF	20	B	S	10
Series No.	Nominal displacement L/min(1800rpm)	Pressure adjustment range kgf/cm <sup>2</sup>	Shaft key mark	Design No.
VPSF	12	A:10-20 kgf/cm <sup>2</sup> B:15-35 kgf/cm <sup>2</sup> C:30-55 kgf/cm <sup>2</sup> D:50-70 kgf/cm <sup>2</sup>	No mark: parallel key  S: spline shaft	10
	15			
	20			
	30			
	40			

Allowed rotating speed: minimum:800r/min, maximum:1800r/min

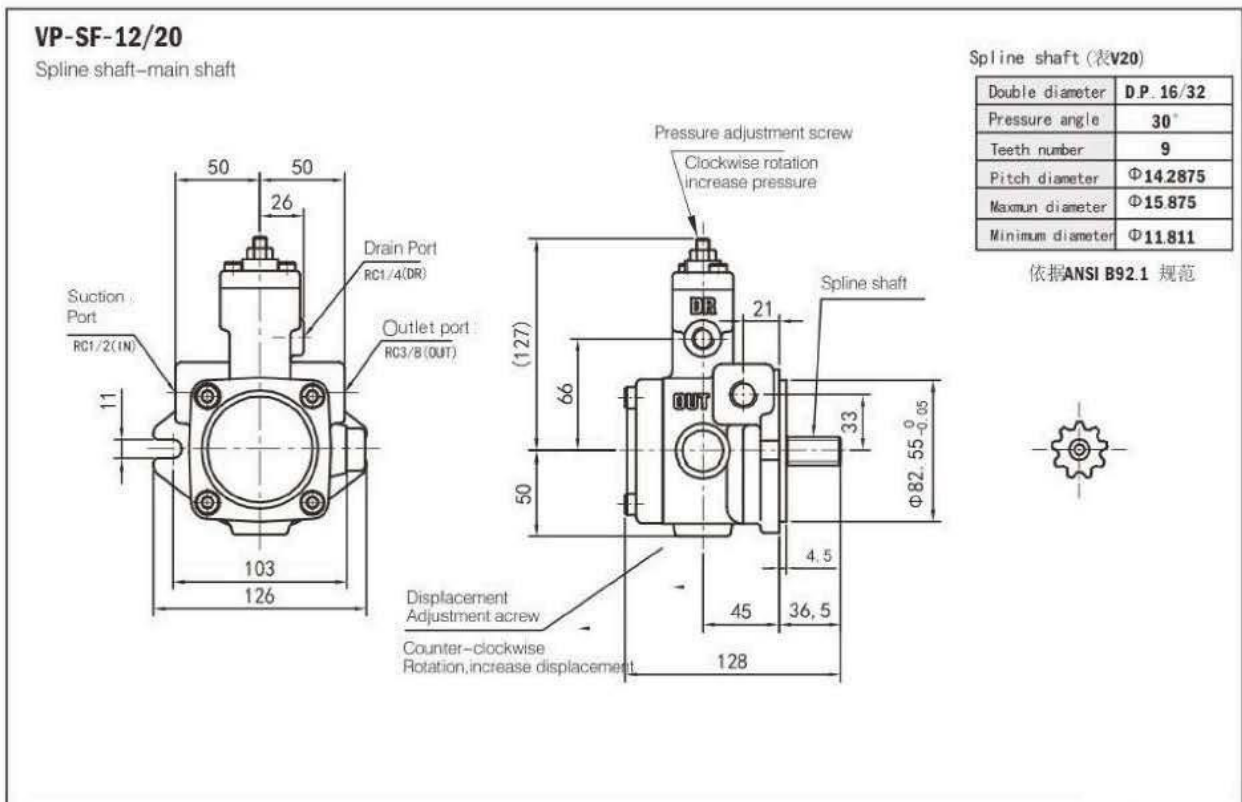
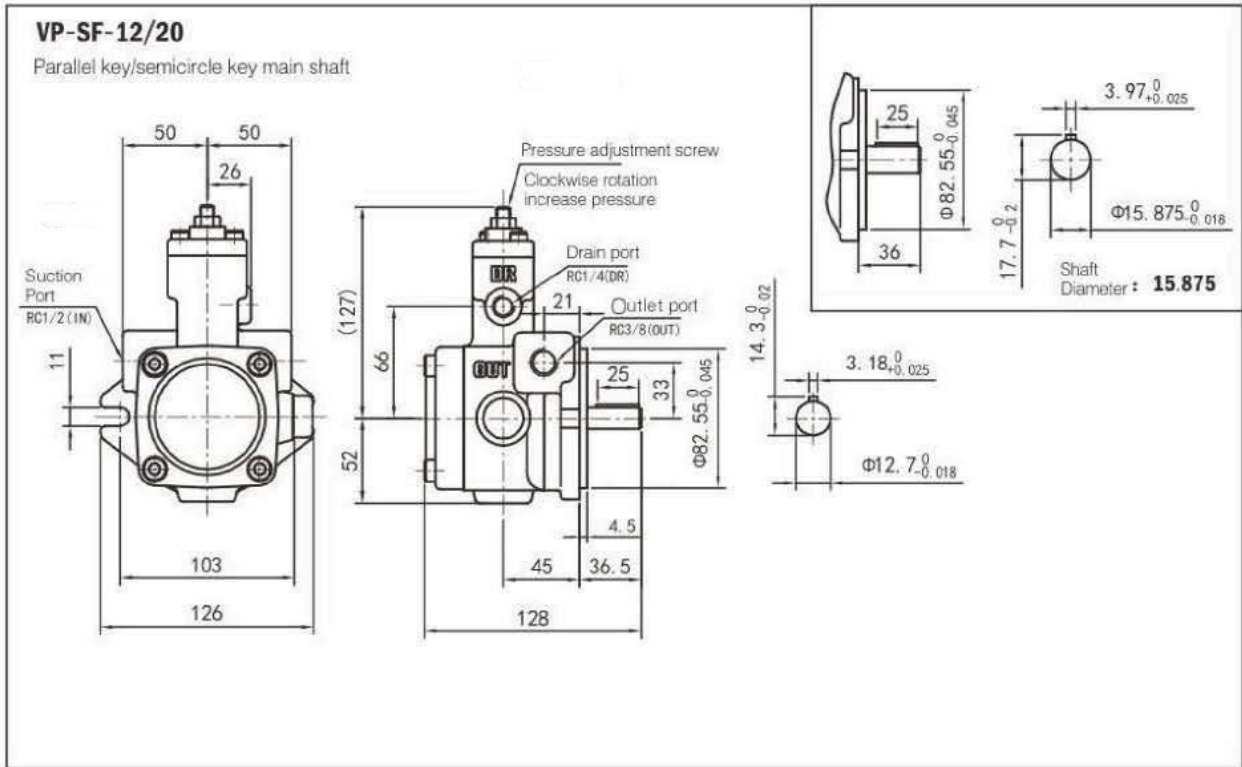
Drain oil pipe: drain oil pipe must be installed under the oil level. Pressure should be set as <0.05MPa; Pipe length should be shorter than 1M, don't mix with other oil return pipe.

Performance curve: following data based on oil viscosity 46 mm<sup>2</sup> (ISOVG-46 temperature 40°C)



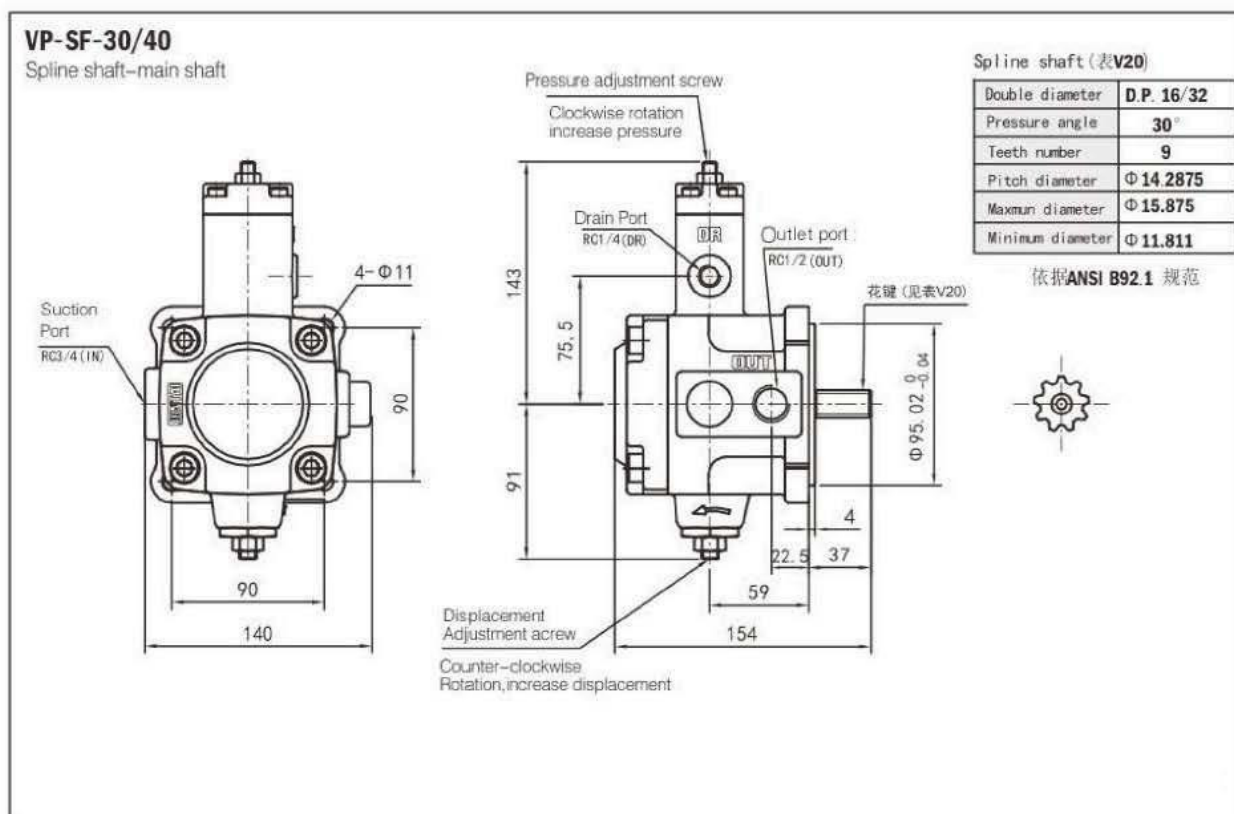
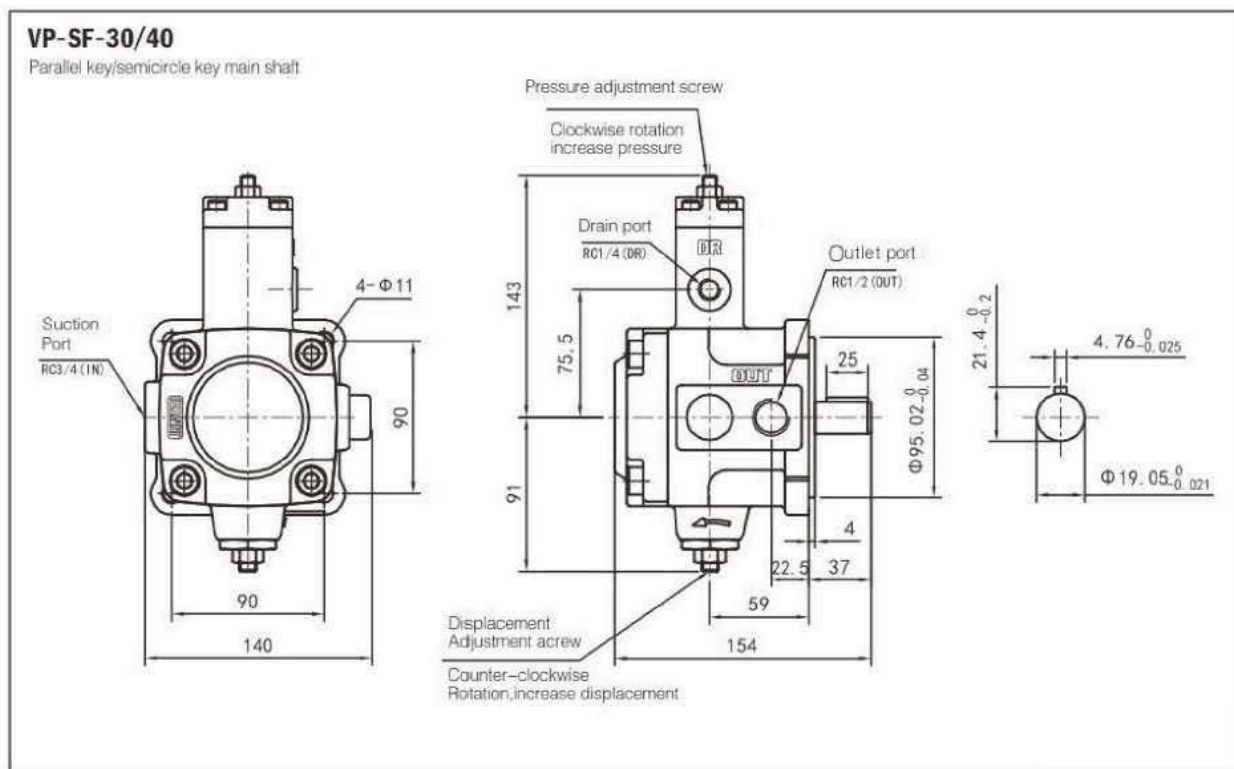
## VP double variable displacement vane pump

### Installation drawing



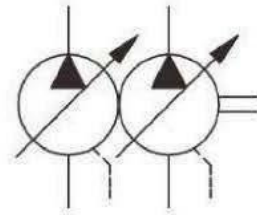
## VP double variable displacement vane pump

### Installation drawing



# Kinde 金德

## VP double variable displacement vane pump



Symbol

### ● Characteristic:

- 1, Use two variable displacement vane pump to connect together, use communal drive shaft.
- 2, Suction port and Outlet port separately, displacement and pressure can be adjusted randomly, widely apply for lathe machine and shoe making machine, etc.
- 3, Simple operation, can connect with motor directly, save space, durability and so on.

### ● VP type double pump model description:

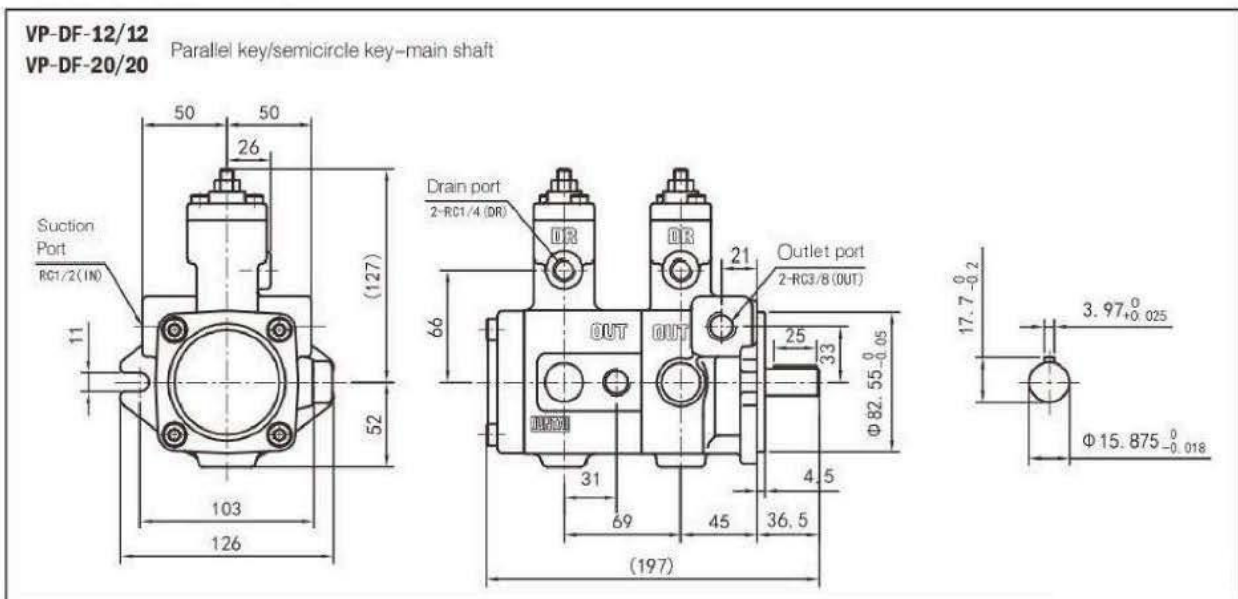
VPDF	20	D	20	D	S	20
Series no.	Displacement of front pump L/min(1800rpm)	Pressure range of front pump kgf/cm <sup>2</sup>	Displacement of back pump L/min(1800rpm)	Pressure range of back pump kgf/cm <sup>2</sup>	Shaft sign	Design no.
VPDF	12	A:10-20 kgf/cm <sup>2</sup>	12	A:10-20 kgf/cm <sup>2</sup>	No mark: parallel key shaft  S:spline shaft	20
	15	B:15-35 kgf/cm <sup>2</sup>	15	B:15-35 kgf/cm <sup>2</sup>		
	20	C:30-55 kgf/cm <sup>2</sup>	20	C:30-55 kgf/cm <sup>2</sup>		
	30	D:50-70 kgf/cm <sup>2</sup>	30	D:50-70 kgf/cm <sup>2</sup>		
	40		40			

Allowed speed: minimum:800r/min; maximum:1800r/min

Drain oil pipe: drain oil pipe must be installed under the oil level. Pressure should be set as <0.05MPa; Pipe length should be shorter than 1M, don't mix with other oil return pipe.

Performance curve, please refer to page 3rd

### ● Mounting dimension



## VP double variable displacement vane pump

### Installation drawing

