

Rapid fittings for plastic tubes

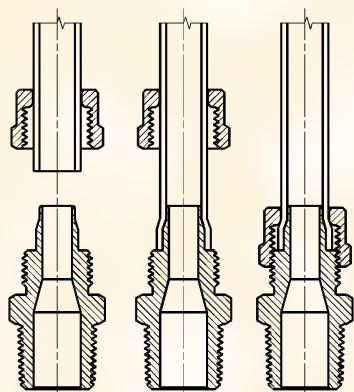
Tubes \varnothing 5/3, 6/4, 8/6, 10/8, 12/10, 15/12,5
 Connections M5, M6, M12x1, M12x1,25, G1/8, G1/4, G3/8, G1/2
 R1/8, R1/4, R3/8, R1/2

The rapid fittings come in 28 different versions and are easily fitted without the use of a spanner. They can also be used with rigid nylon tubes. A locking nut is provided and can be tightened both manually and with a spanner. The special shape of the guiding cone ensures that the tube can not be accidentally cut.



FITTINGS

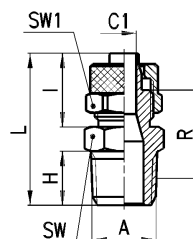
Fitting with connecting plastic



GENERAL DATA

Material	body and nut brass OT58, nickel-plated sealing on thread: PTFE, Nylon
Threads	GAS, conical ISO 7 (BSPT) GAS, cylindrical ISO 228 (BSP) M5 - M6 NPT and metric (available on request)
Pressure	max 25 bar (depending on tubing)
Tube to connect	nylon polyethylene braided PVC rilsan polyurethane
Diameters	5/3, 6/4, 8/6, 10/8, 12/10, 15/12.5 mm
Fluid	compressed air low-pressure fluids
Temperature	(see data for tubing used)

Fittings Mod. 1510...



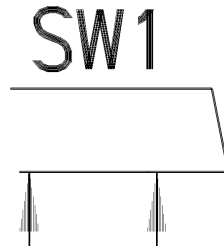
DIMENSIONS

Mod.	Tube	A	C1	H	I	L	R	SW	SW1	
1510	5/3 - 1/8	5/3	R1/8	2	7.5	12.5	24.5	14.5	12	8
1510	6/4 - 1/8	6/4	R1/8	3	7.5	15	27	16	12	12
1510	6/4 - 1/4	6/4	R1/4	3	11	15	31	18.5	14	12
1510	6/4 - 3/8	6/4	R3/8	3	11.5	15	31.5	18.5	17	12
1510	6/4 - 1/2	6/4	R1/2	3	14	15	34.5	20	22	12
1510	6/4 - M12x1.25	6/4	M12x1.25	3	10	15	30	18	14	12
1510	8/6 - 1/8	8/6	R1/8	5	7.5	15	27	16	14	14
1510	8/6 - 1/4	8/6	R1/4	5	11	15	31	18.5	14	14
1510	8/6 - 3/8	8/6	R3/8	5	11.5	15	31.5	18.5	17	14
1510	8/6 - 1/2	8/6	R1/2	5	14	15	34.5	20	22	14
1510	10/8 - 1/8	10/8	R1/8	6.5	7.5	16.5	28.5	16.5	14	16
1510	10/8 - 1/4	10/8	R1/4	6.5	11	16.5	32.5	19	14	16
1510	10/8 - 3/8	10/8	R3/8	6.5	11.5	16.5	33	19	17	16
1510	10/8 - 1/2	10/8	R1/2	6.5	14	16.5	36	20.5	22	16
1510	12/10 - 3/8	12/10	R3/8	8.5	11.5	18	34.5	19	17	19
1510	12/10 - 1/2	12/10	R1/2	8.5	14	18	37.5	20.5	22	19
1510	15/12.5 - 1/2	15/12.5	R1/2	11	14	20	39.5	21	22	22

Fittings Mod. 1511...

Mod. *Sprint*[®]

* with O-Ring assembled.

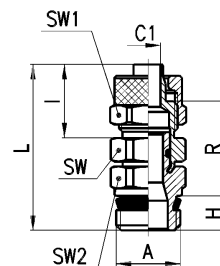


DIMENSIONS

Mod.	Tube	A	C1	H	I	L	R	SW	SW1	SW2
1511 5/3 - M5	5/3	M5	2	3,5	12,5	20,5	10,5	9	8	*
1511 5/3 - M6	5/3	M6	2	4	12,5	21	10,5	9	8	*
1511 5/3 - 1/8	5/3	G1/8	2	5,5	12,5	23,8	11,8	12	8	
1511 6/4 - M5	6/4	M5	3	3,5	13,5	21,5	10,5	9	9	*
1511 6/4 - M6	6/4	M6	3	4	13,5	22	10,5	9	9	*
1511 6/4 - 1/8	6/4	G1/8	3	5,5	15	26,3	13,3	12	12	
1511 6/4 - 1/4	6/4	G1/4	3	7	15	28	13,5	14	12	
1511 6/4 - 3/8	6/4	G3/8	3	8	15	29,3	13,8	19	12	
1511 8/6 - 1/8	8/6	G1/8	5	5,5	15	26,3	13,3	12	14	
1511 8/6 - 1/4	8/6	G1/4	5	7	15	28	13,5	14	14	
1511 8/6 - 3/8	8/6	G3/8	5	8	15	29,3	13,8	19	14	
1511 10/8 - 1/8	10/8	G1/8	6,5	5,5	16,5	27,8	13,8	14	16	
1511 10/8 - 1/4	10/8	G1/4	6,5	7	16,5	29,5	14	14	16	
1511 10/8 - 3/8	10/8	G3/8	6,5	8	16,5	30,8	14,3	19	16	
1511 10/8 - 1/2	10/8	G1/2	6,5	9	16,5	32,5	15	22	16	
1511 12/10 - 3/8	12/10	G3/8	8,5	8	18	32,3	14,3	19	19	
1511 12/10 - 1/2	12/10	G1/2	8,5	9	18	34	15	22	19	
1511 15/12,5 - 1/2	15/12,5	G1/2	11	9	20	36	15,5	22	22	

Fittings Mod. 1560...

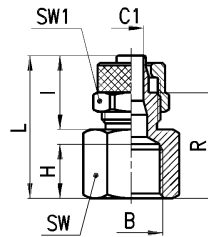
Male stud swivel *Sprint*[®].



DIMENSIONS

Mod.	Tube	A	C1	H	I	L	R	SW	SW1	SW2
1560 6/4 - 1/8	6/4	G1/8	3	5,5	15	31	18	12	12	12
1560 6/4 - 1/4	6/4	G1/4	3	7	15	32,5	18	12	12	14
1560 8/6 - 1/8	8/6	G1/8	5	5,5	15	32	19	14	14	12
1560 8/6 - 1/4	8/6	G1/4	5	7	15	33,5	19	14	14	14
1560 10/8 - 1/4	10/8	G1/4	6,5	7	16,5	34,5	19	14	16	14
1560 10/8 - 3/8	10/8	G3/8	6,5	8	16,5	36	19,5	14	16	19
1560 12/10 - 3/8	12/10	G3/8	6,5	8	18	38	20	17	19	19

Fittings Mod. 1463...

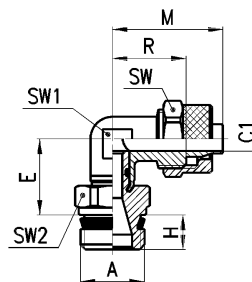


DIMENSIONS

Mod.	Tube	B	C1	H	I	L	R	SW	SW1
1463 5/3 - 1/8	5/3	G1/8	2	7.5	12.5	22.5	16	14	8
1463 6/4 - 1/8	6/4	G1/8	3	7.5	15	25	17.5	14	12
1463 6/4 - 1/4	6/4	G1/4	3	11	15	29	21.5	17	12
1463 6/4 - 3/8	6/4	G3/8	3	11.5	15	29.5	22	22	12
1463 8/6 - 1/8	8/6	G1/8	5	7.5	15	25	17.5	14	14
1463 8/6 - 1/4	8/6	G1/4	5	11	15	29	21.5	17	14
1463 8/6 - 3/8	8/6	G3/8	5	11.5	15	29.5	22	22	14
1463 10/8 - 1/8	10/8	G1/8	6.5	7.5	16.5	26.5	18	14	16
1463 10/8 - 1/4	10/8	G1/4	6.5	11	16.5	30.5	22	17	16
1463 10/8 - 3/8	10/8	G3/8	6.5	11.5	16.5	31	22.5	22	16
1463 10/8 - 1/2	10/8	G1/2	6.5	15	16.5	34.5	26	27	16
1463 12/10 - 3/8	12/10	G3/8	8.5	11.5	18	32.5	22.5	22	19

Fittings Mod. 1541...

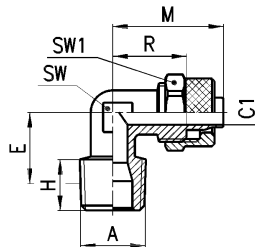
Swivel elbow *Sprint*[®]



DIMENSIONS

Mod.	Tube	A	C1	E	H	M	R	SW	SW1	SW2
1541 6/4 - 1/8	6/4	G1/8	3	15	5.5	22.5	15	12	10	12
1541 6/4 - 1/4	6/4	G1/4	3	15	7	22.5	15	12	10	14
1541 8/6 - 1/8	8/6	G1/8	5	15	5.5	22.5	15	14	10	12
1541 8/6 - 1/4	8/6	G1/4	5	15	7	22.5	15	14	10	14
1541 10/8 - 1/4	10/8	G1/4	6.5	16	7	25.5	17	16	12	14

Fittings Mod. 1500...

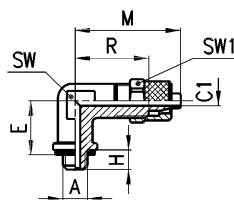


DIMENSIONS

Mod.	Tube	A	C1	E	H	M	R	SW	SW1
1500 5/3 - 1/8	5/3	R1/8	2	13.5	7.5	21.5	15	8	8
1500 6/4 - 1/8	6/4	R1/8	3	13.5	7.5	22.5	15	8	12
1500 6/4 - 1/4	6/4	R1/4	3	15	11	22.5	15	10	12
1500 6/4 - 3/8	6/4	R3/8	3	16.5	11.5	23.5	16	12	12
1500 6/4 - M12x1.25	6/4	M12x1.25	3	14	10	22.5	15	10	12
1500 8/6 - 1/8	8/6	R1/8	5	13.5	7.5	22.5	15	10	14
1500 8/6 - 1/4	8/6	R1/4	5	15	11	22.5	15	10	14
1500 8/6 - 3/8	8/6	R3/8	5	16.5	11.5	24	16	12	14
1500 8/6 - 1/2	8/6	R1/2	5	21	14	27	19	16	14
1500 10/8 - 1/8	10/8	R1/8	6.5	15	7.5	25.5	17	12	16
1500 10/8 - 1/4	10/8	R1/4	6.5	17	11	25.5	17	12	16
1500 10/8 - 3/8	10/8	R3/8	6.5	16.5	11.5	25.5	17	12	16
1500 10/8 - 1/2	10/8	R1/2	6.5	21	14	28.5	20	16	16
1500 12/10 - 3/8	12/10	R3/8	8.5	19	11.5	30	20	14	19
1500 12/10 - 1/2	12/10	R1/2	8.5	21	14	30.5	20.5	16	19
1500 15/12.5 - 1/2	15/12.5	R1/2	11	21	14	34	22.5	16	22

Fitting Mod. 1501 5/3-M5

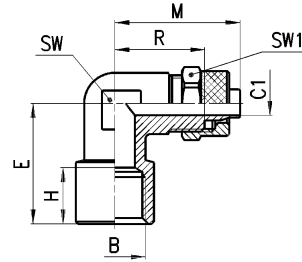
With Mod. 2661 assembled.



DIMENSIONS

Mod.	Tube	A	C1	E	H	M	R	SW	SW1
1501 5/3-M5	5/3	M5	2	11	4	21.5	15	8	8

Fittings Mod. 1493...

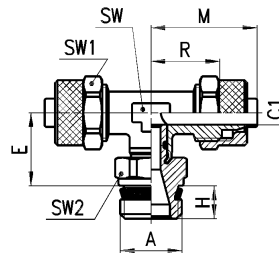


DIMENSIONS

Mod.	Tube	B	C1	E	H	M	R	SW	SW1
1493 6/4 - 1/8	6/4	G1/8	3	18.5	7.5	22.5	15	10	12
1493 6/4 - 1/4	6/4	G1/4	3	25.5	11	26.5	19	14	12
1493 8/6 - 1/8	8/6	G1/8	5	18.5	7.5	22.5	15	10	14
1493 8/6 - 1/4	8/6	G1/4	5	25.5	11	26.5	19	14	14
1493 10/8 - 1/4	10/8	G1/4	6.5	25.5	11	27.5	18	14	16
1493 12/10 - 3/8	12/10	G3/8	8.5	28	11.5	30.5	19.5	16	19

Fittings Mod. 1431...

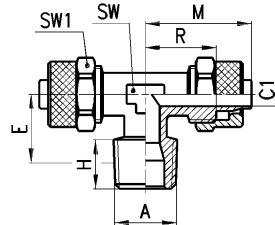
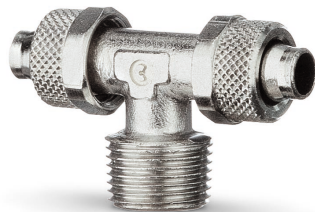
Swivel branch tee *Sprint*®.



DIMENSIONS

Mod.	Tube	A	C1	E	H	M	R	SW	SW1	SW2
1431 6/4 - 1/8	6/4	G1/8	3	15	5.5	22.5	15	12	10	12
1431 6/4 - 1/4	6/4	G1/4	3	15	7	22.5	15	12	10	14
1431 8/6 - 1/8	8/6	G1/8	5	15	5.5	22.5	15	14	10	12
1431 8/6 - 1/4	8/6	G1/4	5	15	7	22.5	15	14	10	14
1431 10/8 - 1/4	10/8	G1/4	6.5	16	7	25.5	17	16	12	14

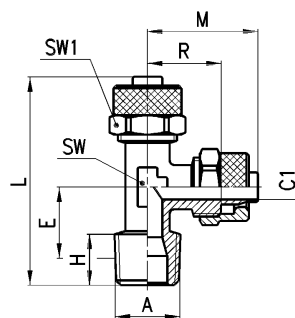
Fittings Mod. 1410...



DIMENSIONS

Mod.	Tube	A	C1	E	H	M	R	SW	SW1	
1410	5/3 -1/8	5/3	R1/8	2	13.5	7.5	21.5	15	8	8
1410	6/4 -1/8	6/4	R1/8	3	13.5	7.5	22.5	15	8	12
1410	6/4 -1/4	6/4	R1/4	3	15	11	22.5	15	10	12
1410	8/6 -1/8	8/6	R1/8	5	13.5	7.5	22.5	16	10	14
1410	8/6 -1/4	8/6	R1/4	5	15	11	22.5	16	10	14
1410	8/6 -3/8	8/6	R3/8	5	16.5	11.5	24	16	12	14
1410	10/8 -1/8	10/8	R1/8	6.5	15	7.5	25.5	17	12	16
1410	10/8 -1/4	10/8	R1/4	6.5	17	11	25.5	17	12	16
1410	10/8 -3/8	10/8	R3/8	6.5	16.5	11.5	25.5	17	12	16
1410	10/8 -1/2	10/8	R1/2	6.5	21	14	28.5	20	16	16
1410	12/10 -3/8	12/10	R3/8	8.5	19	11.5	30	20	14	19
1410	12/10 -1/2	12/10	R1/2	8.5	21	14	30.5	20.5	16	19
1410	15/12.5 -1/2	15/12.5	R1/2	11	21	14	34	22.5	16	22

Fittings Mod. 1420...

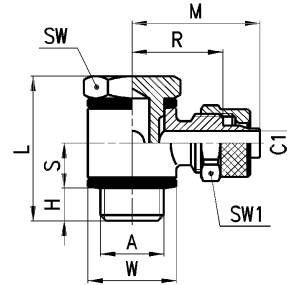


DIMENSIONS

Mod.	Tube	A	C1	E	H	L	M	R	SW1	SW2	
1420	5/3 -1/8	5/3	R1/8	2	13.5	7.5	38.5	21.5	15	8	8
1420	6/4 -1/8	6/4	R1/8	3	13.5	7.5	39.5	22.5	15	8	12
1420	6/4 -1/4	6/4	R1/4	3	15	11	42.5	22.5	15	10	12
1420	8/6 -1/8	8/6	R1/8	5	13.5	7.5	39.5	22.5	15	10	14
1420	8/6 -1/4	8/6	R1/4	5	15	11	42.5	22.5	15	10	14
1420	10/8 -1/8	10/8	R1/8	6.5	15	7.5	43.5	25.5	17	12	16
1420	10/8 -1/4	10/8	R1/4	6.5	17	11	47	25.5	17	12	16

Fittings Mod. 1521...

Only on request.

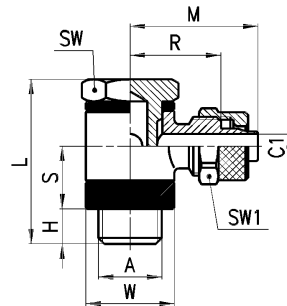


DIMENSIONS

Mod.	Tube	A	C1	H	L	S	M	R	W	SW	SW1
1521 5/3 - M5	5/3	M5	2	3	18	4.5	17	10.5	8	8	8
1521 5/3 - 1/8	5/3	G1/8	2	6	27	8.5	22.5	16	14	14	8
1521 6/4 - M5	6/4	M5	3	3	18	4.5	18	10.5	18	8	9
1521 6/4 - 1/8	6/4	G1/8	3	6	27	8.5	24	16.5	14	14	12
1521 6/4 - 1/4	6/4	G1/4	3	8	29.5	8.5	26	16.5	18	17	12
1521 6/4 - 3/8	6/4	G3/8	3	8	30	8.5	28	20	21	19	12
1521 8/6 - 1/8	8/6	G1/8	5	6	27	8.5	24	16.5	14	14	14
1521 8/6 - 1/4	8/6	G1/4	5	8	29.5	8.5	26	18.5	16	17	14
1521 8/6 - 3/8	8/6	G3/8	5	8	30	8.5	28	20.5	21	19	14
1521 8/6 - 1/2	8/6	G1/2	5	9	31	8.5	30	22.5	26	27	14

Fittings Mod.1525...

Only on request.



DIMENSIONS

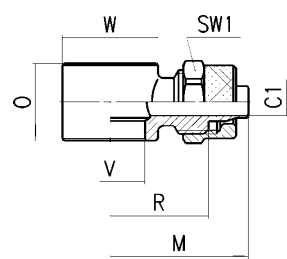
Mod.	Tube	A	C1	H	L	S	M	R	W	SW	SW1
1525 6/4 - 1/8	6/4	G1/8	3	6	31	12.5	24	16.5	14	14	12
1525 6/4 - 1/4	6/4	G1/4	3	8	33.5	12.5	26	16.5	18	17	12
1525 6/4 - 3/8	6/4	G3/8	3	8	34	12.5	28	18.5	21	19	12
1525 8/6 - 1/8	8/6	G1/8	5	6	31	12.5	24	16.5	14	14	14
1525 8/6 - 1/4	8/6	G1/4	5	8	33.5	12.5	26	18.5	16	17	14
1525 8/6 - 3/8	8/6	G3/8	5	8	34	12.5	28	20	21	19	14
1525 8/6 - 1/2	8/6	G1/2	5	9	35	12.5	30	22.5	26	27	14
1525 10/8 - 1/8	10/8	G1/8	6.5	6	31	12.5	25	16.5	14	14	16
1525 10/8 - 1/4	10/8	G1/4	6.5	8	33.5	12.5	27	16.5	18	17	16
1525 10/8 - 3/8	10/8	G3/8	6.5	8	34	12.5	29.5	20	21	19	16
1525 10/8 - 1/2	10/8	G1/2	6.5	9	35	12.5	32	22.5	26	27	16
1525 12/10 - 3/8	12/10	G3/8	8	8	34	12.5	31.5	21	21	19	19
1525 12/10 - 1/2	12/10	G1/2	8.5	9	35	12.5	33.5	23.5	26	27	19
1525 15/12.5 - 1/2	15/12.5	G1/2	11	9	35	12.5	36.5	23.5	26	27	22

Fittings Mod. 1610...

- * Assembly required with Mod. 1635
- assembly possible only with Mod. SCU, SVU, SCO...M5.

DIMENSIONS

Mod.	Tube	C1	M	O	R	V	W	SW1
1610 5/3 - M5	5/3	2	17	9	10.5	5.1	9	8
1610 5/3 - M6	5/3	2	17	9	10.5	5.1	9	8 •
1610 5/3 - 1/8	5/3	2	22.5	14.5	16	9.8	14	8
1610 6/4 - M5	6/4	3	18	9	10.5	5.1	9	9
1610 6/4 - M6	6/4	2	18	9	10.5	5.1	9	9 •
1610 6/4 - 1/8	6/4	3	24	14.5	16.5	9.8	14	12
1610 6/4 - 1/4	6/4	3	26	14.5	18.5	13.2	18	12
1610 6/4 - 3/8	6/4	3	28	14.5	20.5	16.7	21	12
1610 8/6 - 1/8	8/6	5	24	14.5	16.5	9.8	14	14
1610 8/6 - 1/4	8/6	5	26	14.5	18.5	13.2	18	14
1610 8/6 - 3/8	8/6	5	28	14.5	20.5	16.7	21	14
1610 10/8 - 1/8	10/8	6.5	25	14.5	16.5	9.8	14	16 *
1610 10/8 - 1/4	10/8	6.5	27	14.5	18.5	13.2	18	16 *
1610 10/8 - 3/8	10/8	6.5	29.5	14.5	21	16.7	21	16 *
1610 10/8 - 1/2	10/8	6.5	32	14.5	23.5	21	26	16 *
1610 12/10 - 3/8	12/10	8	31.5	14.5	21.5	16.7	21	19 *
1610 12/10 - 1/2	12/10	8.5	33.5	14.5	23.5	21	26	19 *
1610 15/12.5 - 1/2	15/12.5	11	36.5	14.5	25	21	26	22 *

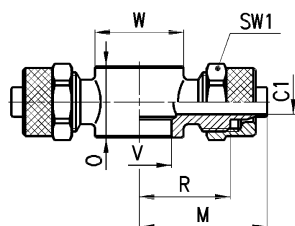


Fittings Mod. 1620...



DIMENSIONS

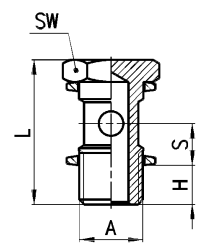
Mod.	Tube	C1	M	O	R	V	W	SW1
1620 6/4 - M5	6/4	3	18	9	10.5	5.1	9	9
1620 6/4 - 1/8	6/4	3	24	14.5	16.5	9.8	14	12
1620 6/4 - 1/4	6/4	3	26	14.5	18.5	13.2	18	12
1620 8/6 - 1/8	8/6	5	24	14.5	16.5	9.8	14	14
1620 8/6 - 1/4	8/6	5	26	14.5	18.5	13.2	18	14



Fittings Mod. 1631 01...

DIMENSIONS

Mod.	A	H	L	S	SW
1631 01- M5	M5	4	18	5.5	8
1631 01- 1/8	G1/8	6	27	8.5	14
1631 01- 1/4	G1/4	8	29.5	8.5	17
1631 01- 3/8	G3/8	8	30	8.5	19
1631 01- 1/2	G1/2	9	31	8.5	27

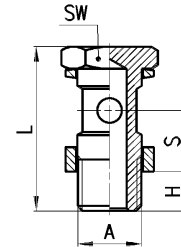


Fittings Mod. 1635 01...

* This model should be assembled with the 1/4 ring connectors.

DIMENSIONS

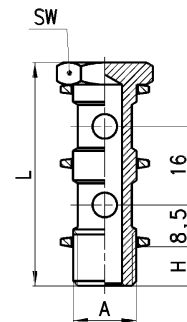
Mod.	A	H	L	S	SW
1635 01- 1/8	G1/8	6	31	12.5	14
1635 01- 1/4	G1/4	8	33.5	12.5	17
1635 01- 3/8	G3/8	8	34	12.5	19
1635 01- 1/2	G1/2	9	35	12.5	27
1635 01- M12x1.25	M12x1.25	8	33.5	12.5	17
1635 01- M12x1.5	M12x1.5	8	33.5	12.5	17



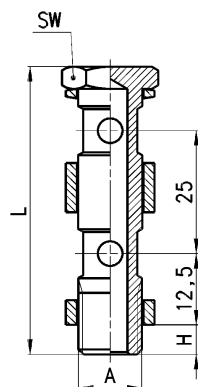
Fittings Mod. 1631 02...

DIMENSIONS

Mod.	A	H	L	SW
1631 02- 1/8	G1/8	6	43	14
1631 02- 1/4	G1/4	8	45.5	17
1631 02- 3/8	G3/8	8	46	19



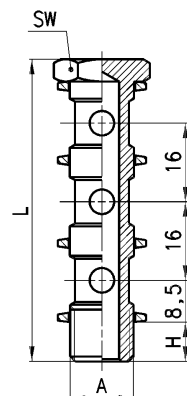
Fittings Mod. 1635 02...



DIMENSIONS

Mod.	A	H	L	SW
1635 02- 1/8	G1/8	6	56	14
1635 02- 1/4	G1/4	8	58.5	17
1635 02- 3/8	G3/8	8	59	19
1635 02- 1/2	G1/2	9	60	27

Fittings Mod. 1631 03...



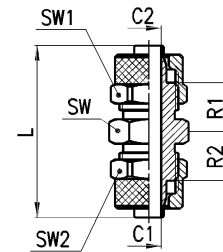
DIMENSIONS

Mod.	A	H	L	SW
1631 03- 1/8	G1/8	6	59	14
1631 03- 1/4	G1/4	8	61.5	17
1631 03- 3/8	G3/8	8	62	19

Fittings Mod. 1580...

DIMENSIONS

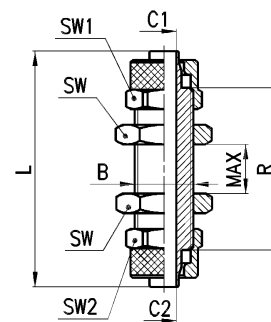
Mod.	Tube	C1	C2	L	R1	R2	SW	SW1	SW2
1580	5/3	2	2	28.5	7.5	7.5	8	8	8
1580	6/4	3	3	34.5	10	10	12	12	12
1580	8/6-6/4	5	3	35	10	10	14	14	12
1580	8/6	5	5	35	10	10	14	14	14
1580	10/8-6/4	6.5	3	36.5	10.5	10	14	16	12
1580	10/8	6.5	6.5	38	10.5	10.5	14	16	16
1580	12/10	8.5	8.5	41	10.5	10.5	17	19	19
1580	15/12.5	11	11	45	11	11	22	22	22



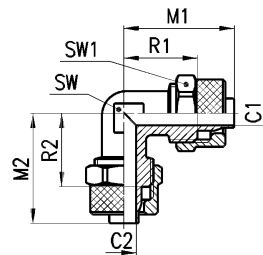
Fittings Mod. 1590...

DIMENSIONS

Mod.	Tube	B	C1	C2	L	R	MAX	SW	SW1	SW2
1590	5/3	5/3	M7x0.75	2	2	40	27	9	9	8
1590	6/4-5/3	6/4-5/3	M10x1	3	2	48	34	14	14	12
1590	6/4	6/4	M10x1	3	3	48	33	14	14	12
1590	8/6-6/4	8/6-6/4	M12x1	5	3	48	33	12	17	14
1590	8/6	8/6	M12x1	5	5	48	33	12	17	14
1590	10/8	10/8	M14x1	6.5	6.5	48	31	10	17	16
1590	12/10	12/10	M16x1	8.5	8.5	53	33	10	19	19



Fittings Mod. 1550...



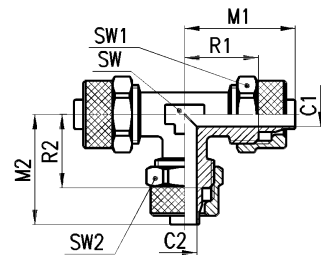
DIMENSIONS

Mod.	Tube	C1	C2	M1	M2	R1	R2	SW	SW1	SW2
1550	6/4	3	3	22.5	22.5	15	15	8	12	12
1550	8/6	5	5	22.5	22.5	15	15	10	14	14
1550	10/8	6.5	6.5	25.5	25.5	17	17	12	16	16
1550	12/10	8.5	8.5	30	30	20	20	14	19	19
1550	15/12.5	11	11	34	34	22.5	22.5	16	22	22

Fittings Mod. 1540...



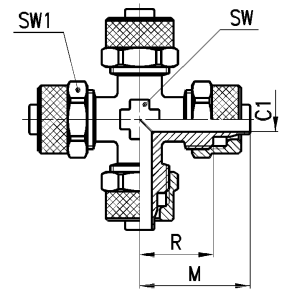
DIMENSIONS											
Mod.	Tube	C1	C2	M1	M2	R1	R2	SW	SW1	SW2	
1540	5/3	5/3	2	2	21.5	21.5	15	15	8	8	8
1540	6/4	6/4	3	3	22.5	22.5	15	15	8	12	12
1540	8/6-6/4	8/6-6/4	5	3	22.5	22.5	15	15	10	14	12
1540	8/6	8/6	5	5	22.5	22.5	15	15	10	14	14
1540	10/8-6/4	10/8-6/4	6.5	3	25.5	24	17	16.5	12	16	12
1540	10/8-8/6	10/8-8/6	6.5	5	25.5	24	17	16.5	12	16	14
1540	10/8	10/8	6.5	6.5	25.5	25.5	17	17	12	16	16
1540	12/10	12/10	8.5	8.5	30	30	20	20	14	19	19
1540	15/12.5	15/12.5	11	11	34	34	22.5	22.5	16	22	22



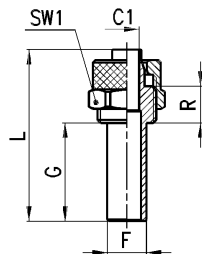
Fittings Mod. 1600...



DIMENSIONS							
Mod.	Tube	C1	M	R	SW	SW1	
1600	6/4	6/4	3	22.5	15	8	12
1600	8/6	8/6	5	22.5	15	10	14



Fittings Mod. 1470...

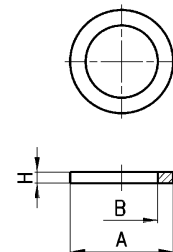


DIMENSIONS							
Mod.	Tube	F	C1	G	L	R	SW1
1470	6/4	6	3	20	35	7.5	12
1470	8/6	8	5	20	35	7.5	14

Fittings Mod. 2651...



Aluminium

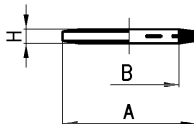


DIMENSIONS			
Mod.	A	B	H
2651 1/8	14	9.8	1.5
2651 1/4	18	13.2	1.5
2651 3/8	22	16.7	1.5
2651 1/2	26	20.9	1.5

Fittings Mod. 2661...

DIMENSIONS

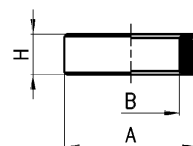
Mod.	A	B	H
2661 M3	4.9	2.8	0.7
2661 M5	8	5.2	1
2661 M6	9	6.2	1
2661 1/8	14	10.2	1.5
2661 1/4	18	13.5	1.5
2661 3/8	21	16.5	1.5
2661 1/2	26	21.2	1.5



Fittings Mod. 2665...

DIMENSIONS

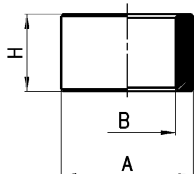
Mod.	A	B	H
2665 1/8	14	9.8	5
2665 1/4	18	13.2	5
2665 3/8	21	16.8	5
2665 1/2	26	21.1	5



Fittings Mod. 2669...

DIMENSIONS

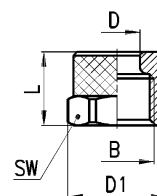
Mod.	A	B	H
2669 1/8	14	9.8	10
2669 1/4	18	13.2	10
2669 3/8	21	16.8	10
2669 1/2	26	21.1	10



Fittings Mod. 1703...

DIMENSIONS

Mod.	Tube	B	D	D1	L	SW1
1703 5/3 - M7x0.75	5/3	M7x0.75	5.10	8.8	8.5	8
1703 6/4 - M8x0.75	6/4	M8x0.75	6.10	9.8	8.5	9
1703 6/4 - M10x1	6/4	M10x1	6.10	13.3	10	12
1703 8/6 - M12x1	8/6	M12x1	8.15	15.5	10	14
1703 10/8 - M14x1	10/8	M14x1	10.15	17.5	13	16
1703 12/10 - M16x1	12/10	M16x1	12.2	21	13.5	19
1703 15/12.5 - M20x1	15/12.5	M20x1	15.2	24.5	16	22



Fittings Mod. 1723...

DIMENSIONS

Mod.	Tube	B	F	D	D1	G	L	SW
1723 6/4 - M10x1	6/4	M10x1	8.9	6.10	13.3	18	90.5	12
1723 8/6 - M12x1	8/6	M12x1	10.9	8.15	15.5	18	94.5	14
1723 10/8 - M14x1	10/8	M14x1	12.5	10.15	17.5	20	96.5	16
1723 12/10 - M16x1	12/10	M16x1	15.5	12.2	21	22	108	19
1723 15/12.5 - M20x1	15/12.5	M20x1	18.5	15.2	24.5	26	120	22

